



# INTERNATIONAL GEMOLOGICAL INSTITUTE

ELECTRONIC COPY

## LABORATORY GROWN DIAMOND REPORT

LG582392498


### IGI LABORATORY GROWN DIAMOND ID REPORT

September 11, 2023

IGI Report Number **LG582392498**

#### ROUND BRILLIANT

**4.63 - 4.68 X 2.96 MM**

Carat Weight	0.40 CARAT
Color Grade	H
Clarity Grade	VVS 2
Cut Grade	EXCELLENT
Polish	EXCELLENT
Symmetry	VERY GOOD
Fluorescence	NONE
Inscription(s)	 LG582392498

## LABORATORY GROWN DIAMOND REPORT

### IGI LABORATORY GROWN DIAMOND IDENTIFICATION REPORT

September 11, 2023

IGI Report Number **LG582392498**

Description **LABORATORY GROWN DIAMOND**

Shape and Cutting Style **ROUND BRILLIANT**

Measurements **4.63 - 4.68 X 2.96 MM**

#### GRADING RESULTS

Carat Weight **0.40 CARAT**

Color Grade **H**

Clarity Grade **VVS 2**

Cut Grade **EXCELLENT**

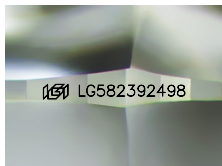
#### ADDITIONAL GRADING INFORMATION

Polish **EXCELLENT**

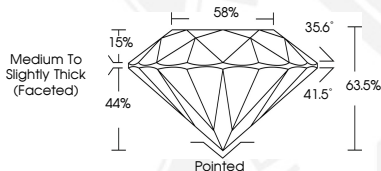
Symmetry **VERY GOOD**

Fluorescence **NONE**

Inscription(s)  **LG582392498**



Sample Image Used




### IGI LABORATORY GROWN DIAMOND ID REPORT

September 11, 2023

IGI Report Number **LG582392498**

#### ROUND BRILLIANT

**4.63 - 4.68 X 2.96 MM**

Carat Weight	0.40 CARAT
Color Grade	H
Clarity Grade	VVS 2
Cut Grade	EXCELLENT
Polish	EXCELLENT
Symmetry	VERY GOOD
Fluorescence	NONE
Inscription(s)	 LG582392498



THIS DOCUMENT WAS PRODUCED WITH THE FOLLOWING SECURITY MEASURES: SPECIAL DOCUMENT PAPER, INK SCREENS, WATERMARK, BACKGROUND DESIGN, HOLOGRAM AND OTHER SECURITY FEATURES NOT LISTED AND DO EXCEED DOCUMENT SECURITY INDUSTRY GUIDELINES.

For terms & conditions and to verify this report, please visit [www.igi.org](http://www.igi.org)