



**ELECTRONIC COPY**

## LABORATORY GROWN DIAMOND REPORT

May 24, 2023	
IGI Report Number	LG583315787
Description	LABORATORY GROWN DIAMOND
Shape and Cutting Style	ROUND BRILLIANT
Measurements	7.40 - 7.43 X 4.58 MM

## GRADING RESULTS

Carat Weight	1.57 CARAT
Color Grade	D
Clarity Grade	VVS 2
Cut Grade	IDEAL

### ADDITIONAL GRADING INFORMATION

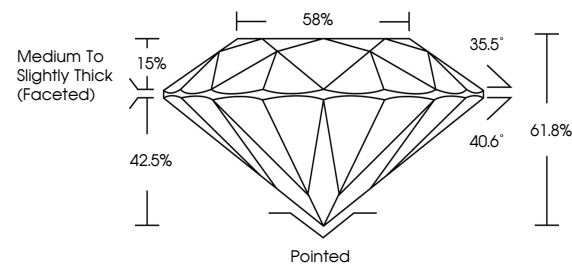
Polish	EXCELLENT
Symmetry	EXCELLENT
Fluorescence	NONE
Inscription(s)	 LG583315787

Comments: As Grown - No indication of post-growth treatment.  
This Laboratory Grown Diamond was created by High Pressure High Temperature (HPHT) growth process.  
Type II

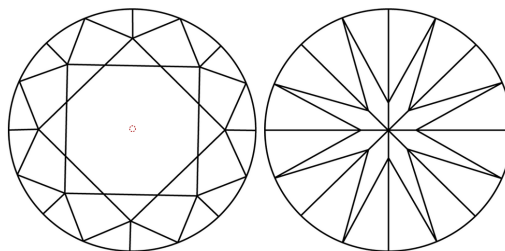
## LABORATORY GROWN DIAMOND REPORT

LG583315787  
Report verification at [igi.org](https://igi.org)

## PROPORTIONS



## CLARITY CHARACTERISTICS



### KEY TO SYMBOLS

Red symbols indicate internal characteristics.  
Green symbols indicate external characteristics.

LABORATORY GROWN  
DIAMOND REPORT

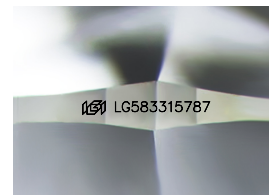
## GRADING SCALES

## CLARITY

IF	VVS <sup>1-2</sup>	VS <sup>1-2</sup>	SI <sup>1-2</sup>	I <sup>1-3</sup>
Internally Flawless	Very Very Slightly Included	Very Slightly Included	Slightly Included	Included

**COLOR**

D E F G H I J Faint Very Light Light



Sample Image Used



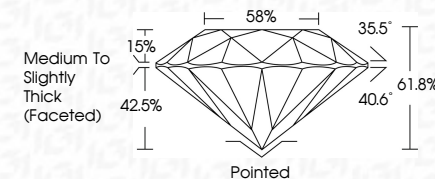
© IGI 2020, International Gemological Institute

FD - 10 20

## LABORATORY GROWN DIAMOND REPORT

May 24, 2023	
IGI Report Number	LG583315787
Description	LABORATORY GROWN DIAMOND
Shape and Cutting Style	ROUND BRILLIANT
Measurements	7.40 - 7.43 X 4.58 MM

Carat Weight	1.57 CARAT
Color Grade	D
Clarity Grade	VVS 2
Cut Grade	IDEAL



### ADDITIONAL GRADING INFORMATION

Polish	EXCELLENT
Symmetry	EXCELLENT
Fluorescence	NONE
Inscription(s)	 LG583315787
Comments: As Grown - No indication of post-growth treatment.	
This Laboratory Grown Diamond was created by High Pressure High Temperature (HPHT) growth process.	
Type II	



May 24, 2023	IGI Report No. LG568315787	1.57 CARAT	VVS 2	IDEAL	61.5%	56%	Medium to Slightly Thick (Faceted)	Pointed	EXCELLENT	EXCELLENT	NONE	681 LG568315787
ROUND BRILLIANT	7.40 - 7.43 X 4.58 MM	Color Weight	Color Grade	Clarity Grade	Cut Grade	Depth	Table	Girdle	Culet	Pavil	Symmetry	Fluorescence
												Inscription(s)
<p>Comments: No indication of post-growth treatment.</p> <p>The Laboratory Growth Diamond was created by High Pressure High Temperature (HPHT) growth process.</p>												