



**ELECTRONIC COPY**

**LABORATORY GROWN DIAMOND REPORT**

May 23, 2023  
IGI Report Number **LG583317196**  
Description **LABORATORY GROWN  
DIAMOND**  
Shape and Cutting Style **ROUND BRILLIANT**  
Measurements **9.84 - 9.87 X 6.07 MM**

**GRADING RESULTS**

Carat Weight **3.65 CARATS**  
Color Grade **D**  
Clarity Grade **VVS 1**  
Cut Grade **IDEAL**

**ADDITIONAL GRADING INFORMATION**

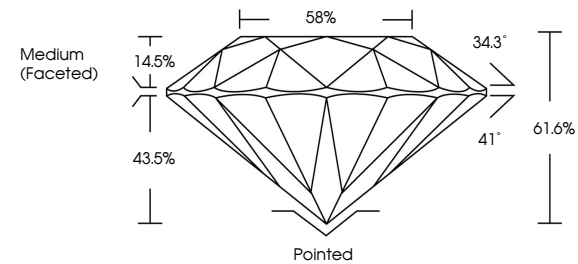
Polish **EXCELLENT**  
Symmetry **EXCELLENT**  
Fluorescence **NONE**  
Inscription(s) **LG583317196**

Comments: HEARTS & ARROWS  
As Grown - No indication of post-growth treatment.  
This Laboratory Grown Diamond was created by High Pressure High Temperature (HPHT) growth process.  
Type II

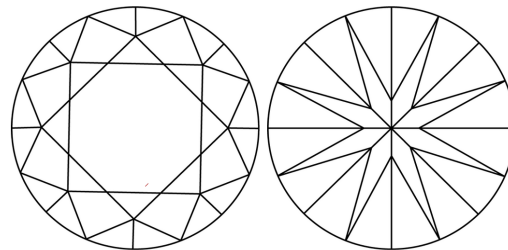
**LABORATORY GROWN DIAMOND REPORT**

**LG583317196**  
Report verification at [igi.org](http://igi.org)

**PROPORTIONS**

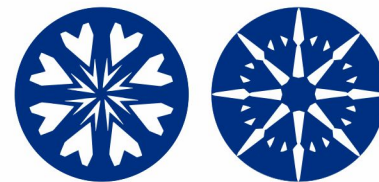


**CLARITY CHARACTERISTICS**



**KEY TO SYMBOLS**

Red symbols indicate internal characteristics.  
Green symbols indicate external characteristics.



**LABORATORY GROWN  
DIAMOND REPORT**

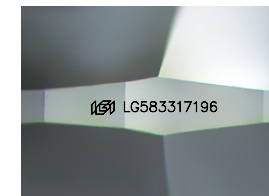
**GRADING SCALES**

**CLARITY**

| IF                  | VVS <sup>1-2</sup>          | VS <sup>1-2</sup>      | SI <sup>1-2</sup> | I <sup>1-3</sup> |
|---------------------|-----------------------------|------------------------|-------------------|------------------|
| Internally Flawless | Very Very Slightly Included | Very Slightly Included | Slightly Included | Included         |

**COLOR**

| D | E | F | G | H | I | J | Faint | Very Light | Light |
|---|---|---|---|---|---|---|-------|------------|-------|
|   |   |   |   |   |   |   |       |            |       |



Sample Image Used

**LABORATORY GROWN DIAMOND REPORT**

May 23, 2023  
IGI Report Number **LG583317196**  
Description **LABORATORY GROWN  
DIAMOND**  
Shape and Cutting Style **ROUND BRILLIANT**  
Measurements **9.84 - 9.87 X 6.07 MM**

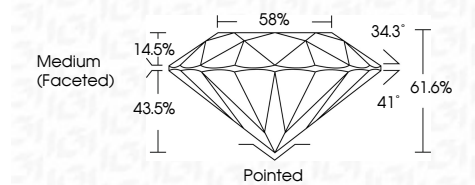
**GRADING RESULTS**

Carat Weight **3.65 CARATS**  
Color Grade **D**  
Clarity Grade **VVS 1**  
Cut Grade **IDEAL**

**ADDITIONAL GRADING INFORMATION**

Polish **EXCELLENT**  
Symmetry **EXCELLENT**  
Fluorescence **NONE**  
Inscription(s) **LG583317196**

Comments: HEARTS & ARROWS  
As Grown - No indication of post-growth treatment.  
This Laboratory Grown Diamond was created by High Pressure High Temperature (HPHT) growth process.  
Type II



|                           |                           |                       |       |       |        |       |        |                  |              |                 |                           |  |  |
|---------------------------|---------------------------|-----------------------|-------|-------|--------|-------|--------|------------------|--------------|-----------------|---------------------------|--|--|
| May 23, 2023              | IGI Report No LG583317196 | 3.65 CARATS           | D     | VVS 1 | IDEAL  | 61.6% | 58%    | Medium (Faceted) | Pointed      | EXCELLENT       | EXCELLENT                 | NONE   | LG583317196  |
| IGI Report No LG583317196 | ROUND BRILLIANT           | 9.84 - 9.87 X 6.07 MM |       |       |        |       |        |                  |              |                 |                           |  |  |
| Carat Weight              | Color Grade               | Clarity Grade         | Depth | Table | Girdle | Culet | Polish | Symmetry         | Fluorescence | Inscriptions(s) | Comments: HEARTS & ARROWS | As Grown - No indication of post-growth treatment. | This Laboratory Grown Diamond was created by High Pressure High Temperature (HPHT) growth process. |
|                           |                           |                       |       |       |        |       |        |                  |              |                 |                           |  | Type II  |



**IGI**

