



ELECTRONIC COPY

LABORATORY GROWN DIAMOND REPORT

LG583324332

Report verification at igi.org

LABORATORY GROWN
DIAMOND REPORT

LABORATORY GROWN DIAMOND REPORT

LABORATORY GROWN DIAMOND REPORT

May 25, 2023
IGI Report Number **LG583324332**
Description **LABORATORY GROWN
DIAMOND**
Shape and Cutting Style **ROUND BRILLIANT**
Measurements **11.03 - 11.07 X 6.87 MM**

GRADING RESULTS

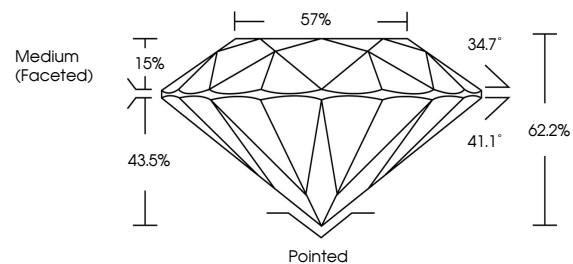
Carat Weight **5.16 CARATS**
Color Grade **G**
Clarity Grade **VS 2**
Cut Grade **IDEAL**

ADDITIONAL GRADING INFORMATION

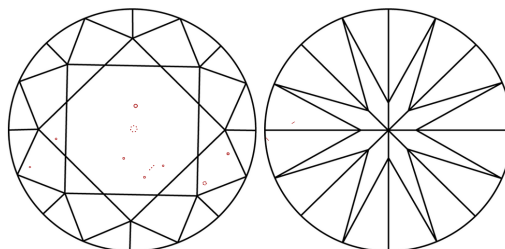
Polish **EXCELLENT**
Symmetry **EXCELLENT**
Fluorescence **NONE**
Inscription(s) **LG583324332**

Comments: HEARTS & ARROWS
This Laboratory Grown Diamond was created by
Chemical Vapor Deposition (CVD) growth process and
may include post-growth treatment.
Type IIa

PROPORTIONS



CLARITY CHARACTERISTICS



KEY TO SYMBOLS

Red symbols indicate internal characteristics.
Green symbols indicate external characteristics.



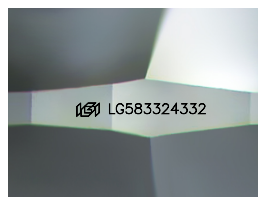
GRADING SCALES

CLARITY

IF	VVS ¹⁻²	VS ¹⁻²	SI ¹⁻²	I ¹⁻³
Internally Flawless	Very Very Slightly Included	Very Slightly Included	Slightly Included	Included

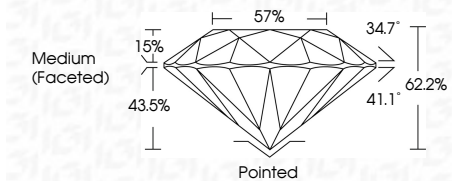
COLOR

D	E	F	G	H	I	J	Faint	Very Light	Light
---	---	---	---	---	---	---	-------	------------	-------



Sample Image Used

May 25, 2023
IGI Report Number **LG583324332**
Description **LABORATORY GROWN
DIAMOND**
Shape and Cutting Style **ROUND BRILLIANT**
Measurements **11.03 - 11.07 X 6.87 MM**
GRADING RESULTS
Carat Weight **5.16 CARATS**
Color Grade **G**
Clarity Grade **VS 2**
Cut Grade **IDEAL**



ADDITIONAL GRADING INFORMATION

Polish **EXCELLENT**
Symmetry **EXCELLENT**
Fluorescence **NONE**
Inscription(s) **LG583324332**
Comments: HEARTS & ARROWS
This Laboratory Grown Diamond was created by
Chemical Vapor Deposition (CVD) growth process and
may include post-growth treatment.
Type IIa



May 25, 2023
IGI Report No LG583324332
ROUND BRILLIANT

11.03 - 11.07 X 6.87 MM

Carat Weight **5.16 CARATS**
Color Grade **G**
Clarity Grade **VS 2**
Cut Grade **IDEAL**
Depth **62.2%**
Table **57%**
Girdle **Medium (Faceted)**

Culet **Pointed**
Polish **EXCELLENT**
Symmetry **EXCELLENT**
Fluorescence **NONE**
Inscriptions(s) **LG583324332**

Comments: HEARTS & ARROWS
This Laboratory Grown Diamond was
created by Chemical Vapor Deposition
(CVD) growth process and may include
post-growth treatment.
Type IIa