



ELECTRONIC COPY

LABORATORY GROWN DIAMOND REPORT

LG583331470

Report verification at igi.org

**LABORATORY GROWN
DIAMOND REPORT**

LABORATORY GROWN DIAMOND REPORT

LABORATORY GROWN DIAMOND REPORT

May 30, 2023
IGI Report Number **LG583331470**
Description **LABORATORY GROWN
DIAMOND**
Shape and Cutting Style **ROUND BRILLIANT**
Measurements **9.83 - 9.86 X 5.96 MM**

GRADING RESULTS

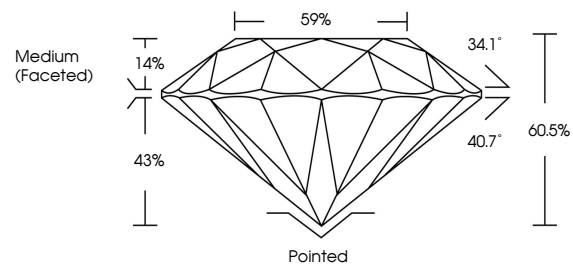
Carat Weight **3.54 CARATS**
Color Grade **G**
Clarity Grade **VVS 2**
Cut Grade **IDEAL**

ADDITIONAL GRADING INFORMATION

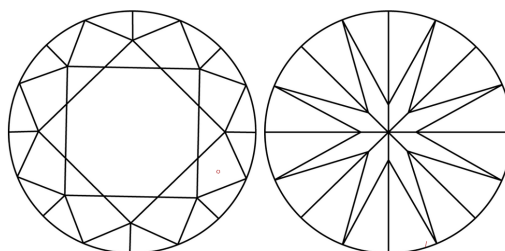
Polish **EXCELLENT**
Symmetry **EXCELLENT**
Fluorescence **NONE**
Inscription(s) **LG583331470**

Comments: HEARTS & ARROWS
This Laboratory Grown Diamond was created by
Chemical Vapor Deposition (CVD) growth process and
may include post-growth treatment.
Type IIa

PROPORTIONS



CLARITY CHARACTERISTICS



KEY TO SYMBOLS

Red symbols indicate internal characteristics.
Green symbols indicate external characteristics.



GRADING SCALES

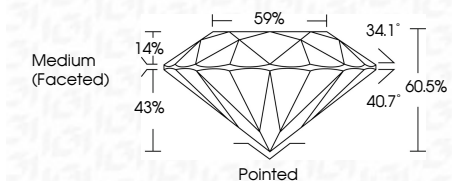
CLARITY

IF	VVS ¹⁻²	VS ¹⁻²	SI ¹⁻²	I ¹⁻³
Internally Flawless	Very Very Slightly Included	Very Slightly Included	Slightly Included	Included

COLOR

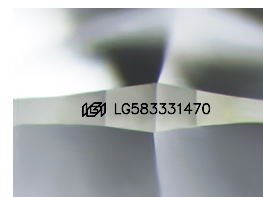
D	E	F	G	H	I	J	Faint	Very Light	Light

May 30, 2023
IGI Report Number **LG583331470**
Description **LABORATORY GROWN
DIAMOND**
Shape and Cutting Style **ROUND BRILLIANT**
Measurements **9.83 - 9.86 X 5.96 MM**
GRADING RESULTS
Carat Weight **3.54 CARATS**
Color Grade **G**
Clarity Grade **VVS 2**
Cut Grade **IDEAL**



ADDITIONAL GRADING INFORMATION

Polish **EXCELLENT**
Symmetry **EXCELLENT**
Fluorescence **NONE**
Inscription(s) **LG583331470**
Comments: HEARTS & ARROWS
This Laboratory Grown Diamond was created by
Chemical Vapor Deposition (CVD) growth process and
may include post-growth treatment.
Type IIa



Sample Image Used

IGI

May 30, 2023
IGI Report No LG583331470
ROUND BRILLIANT
9.83 - 9.86 X 5.96 MM
3.54 CARATS
Color Grade **G**
Clarity Grade **VVS 2**
Cut Grade **IDEAL**
Depth **60.5%**
Table **59%**
Medium (Faceted)

Culet **Pointed**
Polish **EXCELLENT**
Symmetry **EXCELLENT**
Fluorescence **NONE**
Inscriptions(s) **LG583331470**

Comments:
Hearts & Arrows
This Laboratory Grown Diamond was
created by Chemical Vapor Deposition
(CVD) growth process and may include
post-growth treatment.
Type IIa