



ELECTRONIC COPY

LABORATORY GROWN DIAMOND REPORT

May 26, 2023	
IGI Report Number	LG583333342
Description	LABORATORY GROWN DIAMOND
Shape and Cutting Style	ROUND BRILLIANT
Measurements	7.10 - 7.16 X 4.36 MM

GRADING RESULTS

Carat Weight	1.36 CARAT
Color Grade	E
Clarity Grade	VVS 2
Cut Grade	IDEAL

ADDITIONAL GRADING INFORMATION

Polish	EXCELLENT
Symmetry	EXCELLENT
Fluorescence	NONE
Inscription(s)	 LG583333342

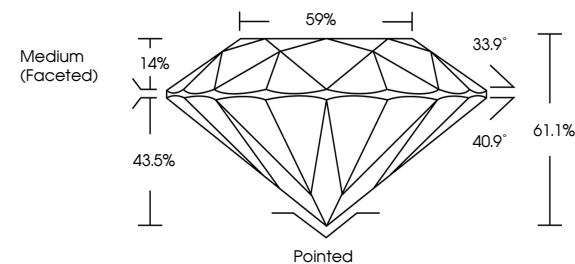
Comments: As Grown - No indication of post-growth treatment.
This Laboratory Grown Diamond was created by High Pressure High Temperature (HPHT) growth process.
Type II

LABORATORY GROWN DIAMOND REPORT

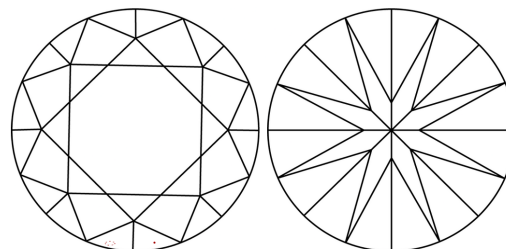
LG583333342

Report verification at igi.org

PROPORTIONS



CLARITY CHARACTERISTICS



KEY TO SYMBOLS

Red symbols indicate internal characteristics.
Green symbols indicate external characteristics.

LABORATORY GROWN
DIAMOND REPORT

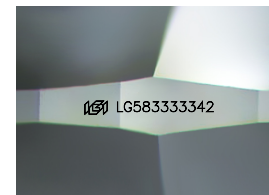
GRADING SCALES

CLARITY

IF	VVS ¹⁻²	VS ¹⁻²	SI ¹⁻²	I ¹⁻³
Internally Flawless	Very Very Slightly Included	Very Slightly Included	Slightly Included	Included

COLOR

D E F G H I J Faint Very Light Light



Sample Image Used



© IGI 2020, International Gemological Institute

FD - 10 20

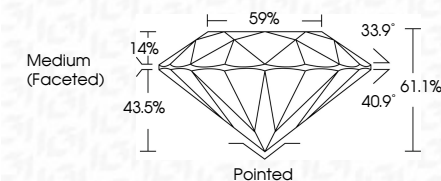
www.igi.org

LABORATORY GROWN DIAMOND REPORT

May 26, 2023	
IGI Report Number	LG583333342
Description	LABORATORY GROWN DIAMOND
Shape and Cutting Style	ROUND BRILLIANT
Measurements	7.10 - 7.16 X 4.36 MM

GRADING RESULTS

Carat Weight	1.36 CARAT
Color Grade	E
Clarity Grade	VVS 2
Cut Grade	IDEAL



ADDITIONAL GRADING INFORMATION

Polish	EXCELLENT
Symmetry	EXCELLENT
Fluorescence	NONE
Inscription(s)	 LG583333342
Comments: As Grown - No indication of post-growth treatment.	
This Laboratory Grown Diamond was created by High Pressure High Temperature (HPHT) growth process.	
Type II	



May 24, 2023	Lab Report No. LG583333342
ROUND BRILLIANT	
1.36 CARAT	VVS 2
E	IDEAL
	61.1%
	59%
	Medium (Faceted)
	Pointed
	EXCELLENT
	EXCELLENT
	NONE
	49 LG583333342
Comments: No indication of post-growth treatment.	
This Laboratory Growth Diamond was created by High Pressure High Temperature (HPHT) growth process.	
Type II	