



ELECTRONIC COPY

LABORATORY GROWN DIAMOND REPORT

June 30, 2023	
IGI Report Number	LG585323110
Description	LABORATORY GROWN DIAMOND
Shape and Cutting Style	CUT CORNERED RECTANGULAR MODIFIED BRILLIANT
Measurements	7.65 X 5.29 X 3.58 MM

GRADING RESULTS

Carat Weight	1.22 CARAT
Color Grade	F
Clarity Grade	VVS 2

ADDITIONAL GRADING INFORMATION

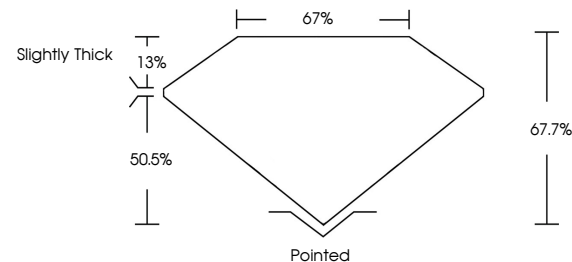
Polish	EXCELLENT
Symmetry	EXCELLENT
Fluorescence	NONE
Inscription(s)	 LG585323110

Comments: This Laboratory Grown Diamond was created by Chemical Vapor Deposition (CVD) growth process and may include post-growth treatment.
Type IIa

LABORATORY GROWN DIAMOND REPORT

LG585323110
Report verification at igi.org

PROPORTIONS



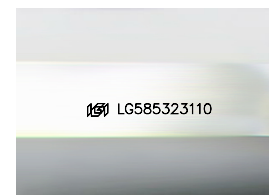
GRADING SCALES

CLARITY

IF	VVS ¹⁻²	VS ¹⁻²	SI ¹⁻²	I ¹⁻³
Internally Flawless	Very Very Slightly Included	Very Slightly Included	Slightly Included	Included

COLOR

D E F G H I J Faint Very Light Light



Sample Image Used



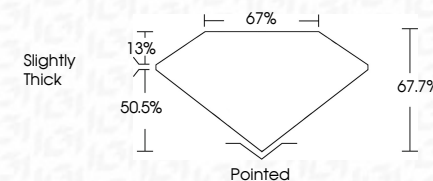
© IGI 2020, International Gemological Institute

FD - 10 20

www.igi.org

LABORATORY GROWN DIAMOND REPORT

June 30, 2023	
IGI Report Number	LG585323110
Description	LABORATORY GROWN DIAMOND
Shape and Cutting Style	CUT CORNERED RECTANGULAR MODIFIED BRILLIANT
Measurements	7.65 X 5.29 X 3.58 MM
GRADING RESULTS	
Carat Weight	1.22 CARAT
Color Grade	F
Clarity Grade	VVS 2



ADDITIONAL GRADING INFORMATION

Polish	EXCELLENT
Symmetry	EXCELLENT
Fluorescence	NONE
Inscription(s)	(15) LG585323110

Comments: This Laboratory Grown Diamond was created by Chemical Vapor Deposition (CVD) growth process and may include post-growth treatment.
Type IIa



Comments:
This Laboratory Grown Diamond was created by Chemical Vapor Deposition (CVD) growth process and may include post-growth treatment.

June 30, 2023	GI Report No. LG56823110	1.27 CARAT	VVS 2	67%	Slightly thick	Polished	EXCELLENT	NONE
	CUT CORNERED RECT. MODIFIED BRILLIANT	Color Grade	Clarity Grade	Depth	Table	Proportions	Symmetry	Fluorescence
1.65 x 0.97 x 0.66 MM	Carat Weight							