



ELECTRONIC COPY

LABORATORY GROWN DIAMOND REPORT

June 13, 2023	
IGI Report Number	LG585328332
Description	LABORATORY GROWN DIAMOND
Shape and Cutting Style	ROUND BRILLIANT
Measurements	7.12 - 7.16 X 4.41 MM

GRADING RESULTS

Carat Weight	1.39 CARAT
Color Grade	E
Clarity Grade	VS 2
Cut Grade	IDEAL

ADDITIONAL GRADING INFORMATION

Polish	EXCELLENT
Symmetry	EXCELLENT
Fluorescence	NONE
Inscription(s)	 LG585328332

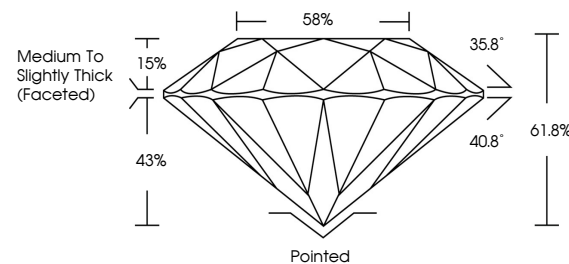
Comments: As Grown - No indication of post-growth treatment.
This Laboratory Grown Diamond was created by High Pressure High Temperature (HPHT) growth process.
Type II

LABORATORY GROWN DIAMOND REPORT

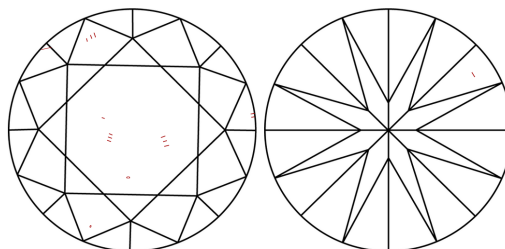
LG585328332

Report verification at igi.org

PROPORTIONS



CLARITY CHARACTERISTICS



KEY TO SYMBOLS

Red symbols indicate internal characteristics.
Green symbols indicate external characteristics.

LABORATORY GROWN
DIAMOND REPORT

GRADING SCALES

CLARITY

IF	VVS ¹⁻²	VS ¹⁻²	SI ¹⁻²	I ¹⁻³
Internally Flawless	Very Very Slightly Included	Very Slightly Included	Slightly Included	Included

COLOR

D E F G H I J Faint Very Light Light



Sample Image Used



© IGI 2020, International Gemological Institute

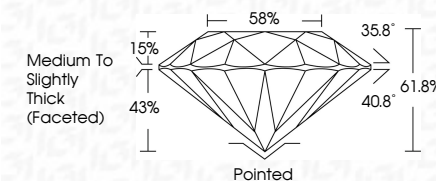
FD - 10 20

LABORATORY GROWN DIAMOND REPORT

June 13, 2023	
IGI Report Number	LG585328332
Description	LABORATORY GROWN DIAMOND
Shape and Cutting Style	ROUND BRILLIANT
Measurements	7.12 - 7.16 X 4.41 MM

GRADING RESULTS

Carat Weight	1.39 CARAT
Color Grade	E
Clarity Grade	VS 2
Cut Grade	IDEAL



ADDITIONAL GRADING INFORMATION

Polish	EXCELLENT
Symmetry	EXCELLENT
Fluorescence	NONE
Inscription(s)	 LG585328332
Comments: As Grown - No indication of post-growth treatment.	
This Laboratory Grown Diamond was created by High Pressure High Temperature (HPHT) growth process.	
Type II	



June 15, 2023	GI Report No. LG56828332	1.97 CARAT	VS 2	Medium to Slightly Tint (Faced)	Pointed	Excellent	EXCELLENT	NONE	169 LG56828332	Comments: No indication of post-growth treatment. This Laboratory Grown Diamond was created by High Pressure High Temperature (HPHT) growth process. Type II
	ROUND BRILLIANT	Color Grade	Ideal		61.6%	66%				
	1.27 - 1.16 X 4.41 MM	Clarity Grade	Very Good							
	Carat Weight	Our Grade	Depth							
		Table	Girdle							
					Quiet	Polish	Symmetry	Fluorescence	Inscription(s)	