



ELECTRONIC COPY

LABORATORY GROWN DIAMOND REPORT

| | |
|-------------------------|-----------------------------|
| June 14, 2023 | |
| IGI Report Number | LG585331381 |
| Description | LABORATORY GROWN DIAMOND |
| Shape and Cutting Style | ROUND BRILLIANT |
| Measurements | 8.68 - 8.72 X 5.30 MM |

GRADING RESULTS

| | |
|---------------|-------------|
| Carat Weight | 2.43 CARATS |
| Color Grade | F |
| Clarity Grade | VS 1 |
| Cut Grade | IDEAL |

ADDITIONAL GRADING INFORMATION

| | |
|----------------|---|
| Polish | EXCELLENT |
| Symmetry | EXCELLENT |
| Fluorescence | NONE |
| Inscription(s) |  LG585331381 |

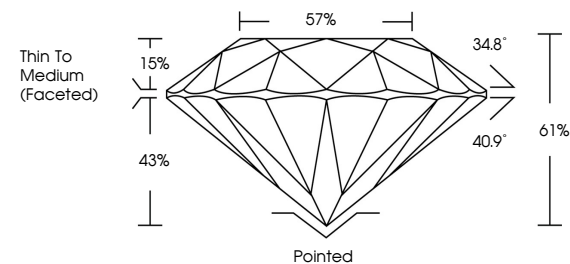
Comments: This Laboratory Grown Diamond was created by Chemical Vapor Deposition (CVD) growth process and may include post-growth treatment.
Type IIa

LABORATORY GROWN DIAMOND REPORT

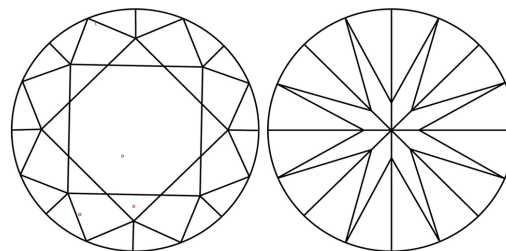
LG585331381

Report verification at igi.org

PROPORTIONS



CLARITY CHARACTERISTICS



KEY TO SYMBOLS

Red symbols indicate internal characteristics.
Green symbols indicate external characteristics.

LABORATORY GROWN
DIAMOND REPORT

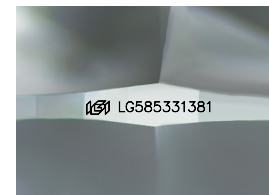
GRADING SCALES

CLARITY

| IF | VVS ¹⁻² | VS ¹⁻² | SI ¹⁻² | I ¹⁻³ |
|---------------------|-----------------------------|------------------------|-------------------|------------------|
| Internally Flawless | Very Very Slightly Included | Very Slightly Included | Slightly Included | Included |

COLOR

D E F G H I J Faint Very Light Light



Sample Image Used



© IGI 2020, International Gemological Institute

FD - 10 20

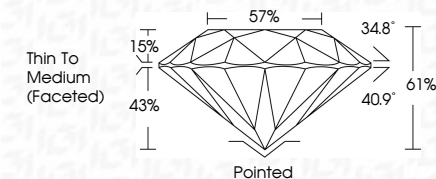
www.igi.org

LABORATORY GROWN DIAMOND REPORT

| | |
|-------------------------|-----------------------------|
| June 14, 2023 | |
| IGI Report Number | LG585331381 |
| Description | LABORATORY GROWN DIAMOND |
| Shape and Cutting Style | ROUND BRILLIANT |
| Measurements | 8.68 - 8.72 X 5.30 MM |

GRADING RESULTS

| | |
|---------------|-------------|
| Carat Weight | 2.43 CARATS |
| Color Grade | F |
| Clarity Grade | VS 1 |
| Cut Grade | IDEAL |



ADDITIONAL GRADING INFORMATION

| | |
|----------------|----------------------------|
| Polish | EXCELLENT |
| Symmetry | EXCELLENT |
| Fluorescence | NONE |
| Inscription(s) | 151 LG585331381 |

Comments: This Laboratory Grown Diamond was created by Chemical Vapor Deposition (CVD) growth process and may include post-growth treatment.
Type IIa



| | | | | | | | | | | | | |
|-----------------|---------------------------|-------------|-------|-------|--------|-----|---------------------------|---------|-----------|--------------|----------------|---|
| June 14, 2028 | GI Report No. LG585331381 | 2.43 CARATS | Vs 1 | ID5AL | 61% | 57% | Thin to Medium (faced) | Pointed | Excellent | NONE | lg LG585331381 | <p>Comments: Created by Crown Diamond usa created by Chemical Vapor Deposition (CVD) growth process and may include post-growth treatment. Type IIa</p> |
| ROUND BRILLIANT | | | | | | | | | | | | |
| Carat Weight | 6.68 - 6.72 X 5.30 MM | | | | | | | | | | | |
| Color Grade | Clarity Grade | Cut Grade | Depth | Table | Girdle | | Quiet | Polish | Symmetry | Fluorescence | Inscription(s) | |