



# INTERNATIONAL GEMOLOGICAL INSTITUTE

ELECTRONIC COPY

## LABORATORY GROWN DIAMOND REPORT

LG585334764

### LABORATORY GROWN DIAMOND REPORT

#### IGI LABORATORY GROWN DIAMOND IDENTIFICATION REPORT

June 22, 2023  
IGI Report Number LG585334764  
Description LABORATORY GROWN DIAMOND  
Shape and Cutting Style ROUND BRILLIANT  
Measurements 4.67 - 4.69 X 2.95 MM

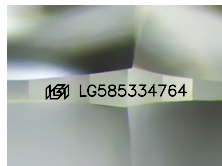
#### GRADING RESULTS

Carat Weight 0.40 CARAT  
Color Grade FANCY VIVID BLUE  
Clarity Grade VS 1  
Cut Grade EXCELLENT

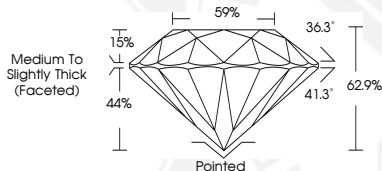
#### ADDITIONAL GRADING INFORMATION

Polish EXCELLENT  
Symmetry EXCELLENT  
Fluorescence NONE  
Inscription(s) IGI LG585334764

Comments: This Laboratory Grown Diamond was created by High Pressure High Temperature (HPHT) growth process. Indications of post-growth treatment.



Sample Image Used



#### IGI LABORATORY GROWN DIAMOND ID REPORT

June 22, 2023  
IGI Report Number LG585334764  
ROUND BRILLIANT  
4.67 - 4.69 X 2.95 MM  
Carat Weight 0.40 CARAT  
Color Grade FANCY VIVID BLUE  
Clarity Grade VS 1  
Cut Grade EXCELLENT  
Polish EXCELLENT  
Symmetry EXCELLENT  
Fluorescence NONE  
Inscription(s) IGI LG585334764

Comments: This Laboratory Grown Diamond was created by High Pressure High Temperature (HPHT) growth process. Indications of post-growth treatment.

#### IGI LABORATORY GROWN DIAMOND ID REPORT

June 22, 2023  
IGI Report Number LG585334764  
ROUND BRILLIANT  
4.67 - 4.69 X 2.95 MM  
Carat Weight 0.40 CARAT  
Color Grade FANCY VIVID BLUE  
Clarity Grade VS 1  
Cut Grade EXCELLENT  
Polish EXCELLENT  
Symmetry EXCELLENT  
Fluorescence NONE  
Inscription(s) IGI LG585334764

Comments: This Laboratory Grown Diamond was created by High Pressure High Temperature (HPHT) growth process. Indications of post-growth treatment.



THIS DOCUMENT WAS PRODUCED WITH THE FOLLOWING SECURITY MEASURES: SPECIAL DOCUMENT PAPER, INK SCREENS, WATERMARK, BACKGROUND DESIGN, HOLOGRAM AND OTHER SECURITY FEATURES NOT LISTED AND DO EXCEED DOCUMENT SECURITY INDUSTRY GUIDELINES.

For terms & conditions and to verify this report, please visit [www.igi.org](http://www.igi.org)