



**INTERNATIONAL
GEMOLOGICAL
INSTITUTE**

ELECTRONIC COPY

**LABORATORY GROWN
DIAMOND REPORT**

LG585334803

**IGI LABORATORY GROWN
DIAMOND ID REPORT**

July 18, 2023

IGI Report Number **LG585334803**

**SQUARE CUSHION MODIFIED
BRILLIANT**

4.97 X 4.90 X 3.30 MM

Carat Weight	0.76 CARAT
Color Grade	FANCY PINK
Clarity Grade	VVS 2
Polish	VERY GOOD
Symmetry	VERY GOOD
Fluorescence	SLIGHT
Inscription(s)	LG585334803

Comments: This Laboratory Grown Diamond was created by Chemical Vapor Deposition (CVD) growth process. Indications of post-growth treatment.

LABORATORY GROWN DIAMOND REPORT

IGI LABORATORY GROWN DIAMOND IDENTIFICATION REPORT

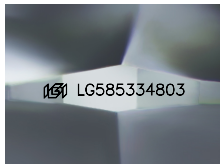
July 18, 2023

IGI Report Number **LG585334803**

Description **LABORATORY GROWN DIAMOND**

Shape and Cutting Style **SQUARE CUSHION MODIFIED BRILLIANT**

Measurements **4.97 X 4.90 X 3.30 MM**



Sample Image Used

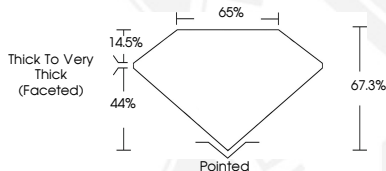
GRADING RESULTS

Carat Weight	0.76 CARAT
Color Grade	FANCY PINK
Clarity Grade	VVS 2

ADDITIONAL GRADING INFORMATION

Polish	VERY GOOD
Symmetry	VERY GOOD
Fluorescence	SLIGHT
Inscription(s)	LG585334803

Comments: This Laboratory Grown Diamond was created by Chemical Vapor Deposition (CVD) growth process. Indications of post-growth treatment.



**IGI LABORATORY GROWN
DIAMOND ID REPORT**

July 18, 2023

IGI Report Number **LG585334803**

**SQUARE CUSHION MODIFIED
BRILLIANT**

4.97 X 4.90 X 3.30 MM

Carat Weight	0.76 CARAT
Color Grade	FANCY PINK
Clarity Grade	VVS 2
Polish	VERY GOOD
Symmetry	VERY GOOD
Fluorescence	SLIGHT
Inscription(s)	LG585334803

Comments: This Laboratory Grown Diamond was created by Chemical Vapor Deposition (CVD) growth process. Indications of post-growth treatment.

THIS DOCUMENT WAS PRODUCED WITH THE FOLLOWING SECURITY MEASURES: SPECIAL DOCUMENT PAPER, INK SCREENS, WATERMARK, BACKGROUND DESIGN, HOLOGRAM AND OTHER SECURITY FEATURES NOT LISTED AND DO EXCEED DOCUMENT SECURITY INDUSTRY GUIDELINES.

For terms & conditions and to verify this report, please visit www.igi.org