



ELECTRONIC COPY

LABORATORY GROWN DIAMOND REPORT

June 26, 2023
 IGI Report Number **LG585335699**
 Description **LABORATORY GROWN
DIAMOND**
 Shape and Cutting Style **PRINCESS CUT**
 Measurements **5.70 X 5.55 X 4.05 MM**

GRADING RESULTS

Carat Weight **1.18 CARAT**
 Color Grade **FANCY VIVID BLUE**
 Clarity Grade **SI 1**

ADDITIONAL GRADING INFORMATION

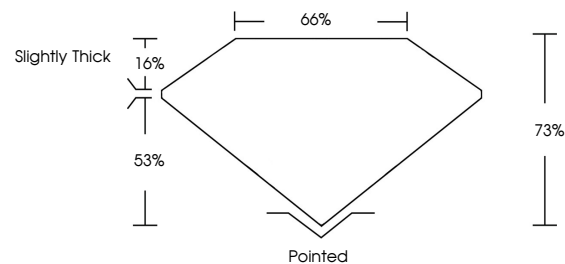
Polish **VERY GOOD**
 Symmetry **VERY GOOD**
 Fluorescence **NONE**
 Inscription(s) **IGI LG585335699**

Comments: This Laboratory Grown Diamond was created by Chemical Vapor Deposition (CVD) growth process.
 Indications of post-growth treatment.

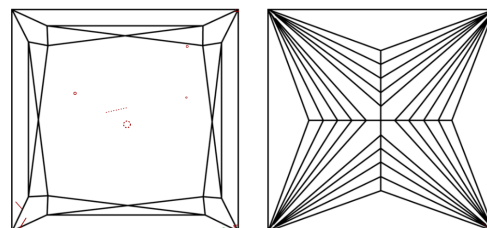
LABORATORY GROWN DIAMOND REPORT

LG585335699
 Report verification at igi.org

PROPORTIONS



CLARITY CHARACTERISTICS



KEY TO SYMBOLS

Red symbols indicate internal characteristics.
 Green symbols indicate external characteristics.

**LABORATORY GROWN
DIAMOND REPORT**

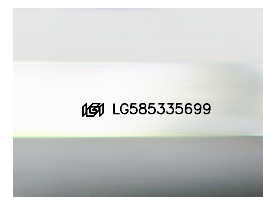
GRADING SCALES

CLARITY

IF	VVS ¹⁻²	VS ¹⁻²	SI ¹⁻²	I ¹⁻³
Internally Flawless	Very Very Slightly Included	Very Slightly Included	Slightly Included	Included

COLOR

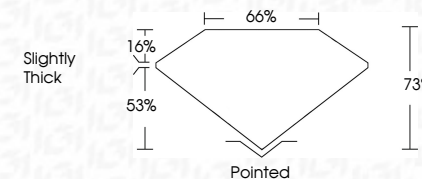
D	E	F	G	H	I	J	Faint	Very Light	Light
Light Tint	Fancy Light	Fancy	Fancy Intense	Fancy Vivid					



Sample Image Used

LABORATORY GROWN DIAMOND REPORT

June 26, 2023
 IGI Report Number **LG585335699**
 Description **LABORATORY GROWN
DIAMOND**
 Shape and Cutting Style **PRINCESS CUT**
 Measurements **5.70 X 5.55 X 4.05 MM**
GRADING RESULTS
 Carat Weight **1.18 CARAT**
 Color Grade **FANCY VIVID BLUE**
 Clarity Grade **SI 1**



ADDITIONAL GRADING INFORMATION

Polish **VERY GOOD**
 Symmetry **VERY GOOD**
 Fluorescence **NONE**
 Inscription(s) **IGI LG585335699**
 Comments: This Laboratory Grown Diamond was created by Chemical Vapor Deposition (CVD) growth process.
 Indications of post-growth treatment.



June 26, 2023
 IGI Report No. **LG585335699**
PRINCESS CUT
1.18 CARAT
5.70 X 5.55 X 4.05 MM
FANCY VIVID BLUE
SI 1
73% 66%
Slightly Thick
Pointed
VERY GOOD
VERY GOOD
NONE
IGI LG585335699

Comments: This Laboratory Grown Diamond was created by Chemical Vapor Deposition (CVD) growth process.
 Indications of post-growth treatment.

