



**ELECTRONIC COPY**

## LABORATORY GROWN DIAMOND REPORT

July 5, 2023	
IGI Report Number	LG586341053
Description	LABORATORY GROWN DIAMOND
Shape and Cutting Style	ROUND BRILLIANT
Measurements	8.80 - 8.81 X 5.43 MM

## GRADING RESULTS

Carat Weight	2.57 CARATS
Color Grade	G
Clarity Grade	VS 1
Cut Grade	IDEAL

### ADDITIONAL GRADING INFORMATION

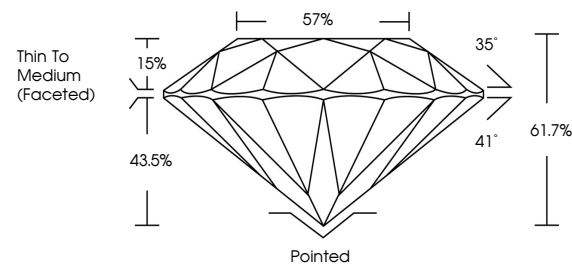
Polish	EXCELLENT
Symmetry	EXCELLENT
Fluorescence	NONE
Inscription(s)	 LG586341053

Comments: As Grown - No indication of post-growth treatment.  
This Laboratory Grown Diamond was created by High Pressure High Temperature (HPHT) growth process.  
Type II  
Faint Blue

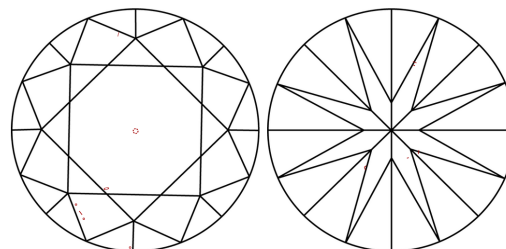
## LABORATORY GROWN DIAMOND REPORT

LG586341053  
Report verification at [igi.org](https://igi.org)

## PROPORTIONS



## CLARITY CHARACTERISTICS



## KEY TO SYMBOLS

Red symbols indicate internal characteristics.  
Green symbols indicate external characteristics.

LABORATORY GROWN  
DIAMOND REPORT

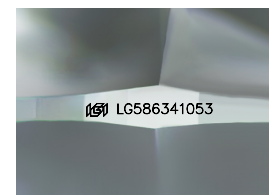
## GRADING SCALES

## CLARITY

IF	VVS <sup>1-2</sup>	VS <sup>1-2</sup>	SI <sup>1-2</sup>	I <sup>1-3</sup>
Internally Flawless	Very Very Slightly Included	Very Slightly Included	Slightly Included	Included

**COLOR**

D E F G H I J Faint Very Light Light



Sample Image Used



© IGI 2020, International Gemological Institute

FD - 10 20



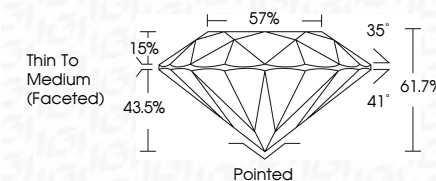
THIS DOCUMENT WAS PRODUCED WITH THE FOLLOWING SECURITY MEASURES: SPECIAL DOCUMENT PAPER, INK SCREENS, WATERMARK, BACKGROUND DESIGNS, HOLOGRAM AND OTHER SECURITY FEATURES NOT LISTED AND DO EXCEED DOCUMENT SECURITY INDUSTRY GUIDELINE

## LABORATORY GROWN DIAMOND REPORT


July 5, 2023	
IGI Report Number	LG586341053
Description	LABORATORY GROWN DIAMOND
Shape and Cutting Style	ROUND BRILLIANT
Measurements	8.80 - 8.81 X 5.43 MM

## GRADING RESULTS

Carat Weight	2.57 CARATS
Color Grade	G
Clarity Grade	VS 1
Cut Grade	IDEAL



### ADDITIONAL GRADING INFORMATION

Polish	EXCELLENT
Symmetry	EXCELLENT
Fluorescence	NONE
Inscription(s)	 LG586341053
Comments: As Grown - No indication of post-growth treatment.	
This Laboratory Grown Diamond was created by High Pressure High Temperature (HPHT) growth process.	
Type II	
Faint Blue	



<div> <div>  </div> <div> <p> <b>Report No. LG586341053</b>  <b>ROUND BRILLIANT</b>  <b>1.80 - 1.81 x 5.43 MM</b>  <b>Color Grade</b>  <b>Clarity Grade</b>  <b>Cut Grade</b>  <b>Depth</b>  <b>Table</b>  <b>Girdle</b> </p> </div> </div>	<div> <div> <p> <b>2.57 CARATS</b>  <b>G</b> </p> </div> <div> <p> <b>VS 1</b>  <b>IDEAL</b>  <b>61.7%</b>  <b>57%</b>  <b>Thin To Medium</b>  <b>(faceted)</b> </p> </div> </div>	<div> <div> <p> <b>Pointed</b>  <b>EXCELLENT</b>  <b>EXCELLENT</b>  <b>EXCELLENT</b>  <b>NONE</b>  <b>1/81 LG586341053</b> </p> </div> <div> <p> <b>Comments:</b>  <b>No indication of post-growth treatment.</b>  <b>The Laboratory Growth Diamond was created by High Pressure High temperature (HPHT) growth process.</b>  <b>Type IIb.</b> </p> </div> </div>
--	--	---