



ELECTRONIC COPY

LABORATORY GROWN DIAMOND REPORT

July 6, 2023	
IGI Report Number	LG586341096
Description	LABORATORY GROWN DIAMOND
Shape and Cutting Style	ROUND BRILLIANT
Measurements	9.64 - 9.67 X 5.79 MM
GRADING RESULTS	
Carat Weight	3.29 CARATS
Color Grade	H
Clarity Grade	VVS 2
Cut Grade	IDEAL

ADDITIONAL GRADING INFORMATION

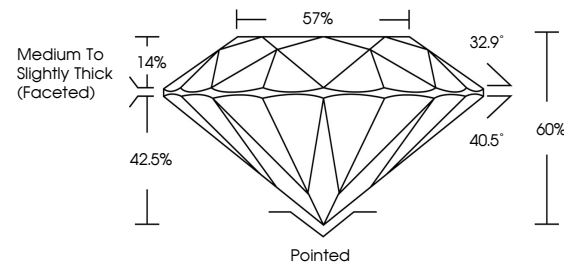
Polish	EXCELLENT
Symmetry	EXCELLENT
Fluorescence	NONE
Inscription(s)	 LG586341096

Comments: As Grown - No indication of post-growth treatment.
This Laboratory Grown Diamond was created by High Pressure High Temperature (HPHT) growth process.
Type II
Faint Blue

LABORATORY GROWN DIAMOND REPORT

LG586341096
Report verification at igi.org

PROPORTIONS



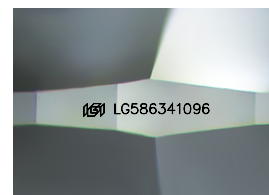
GRADING SCALES

CLARITY

IF	VVS ¹⁻²	VS ¹⁻²	SI ¹⁻²	I ¹⁻³
Internally Flawless	Very Very Slightly Included	Very Slightly Included	Slightly Included	Included

COLOR

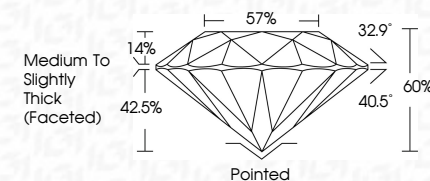
D E F G H I J Faint Very Light Light




Sample Image Used

LABORATORY GROWN DIAMOND REPORT

July 6, 2023	
IGI Report Number	LG586341096
Description	LABORATORY GROWN DIAMOND
Shape and Cutting Style	ROUND BRILLIANT
Measurements	9.64 - 9.67 X 5.79 MM
GRADING RESULTS	
Carat Weight	3.29 CARATS
Color Grade	H
Clarity Grade	VVS 2
Cut Grade	IDEAL



ADDITIONAL GRADING INFORMATION

Polish	EXCELLENT
Symmetry	EXCELLENT
Fluorescence	NONE
Inscription(s)	 LG586341096
Comments: As Grown - No indication of post-growth treatment.	
This Laboratory Grown Diamond was created by High Pressure High Temperature (HPHT) growth process.	
Type II	
Faint Blue	

