



**ELECTRONIC COPY**

**LABORATORY GROWN DIAMOND REPORT**

June 16, 2023  
IGI Report Number **LG586343101**  
Description **LABORATORY GROWN  
DIAMOND**  
Shape and Cutting Style **ROUND BRILLIANT**  
Measurements **16.30 - 16.39 X 9.91 MM**

**GRADING RESULTS**

Carat Weight **16.01 CARATS**  
Color Grade **F**  
Clarity Grade **VS 2**  
Cut Grade **IDEAL**

**ADDITIONAL GRADING INFORMATION**

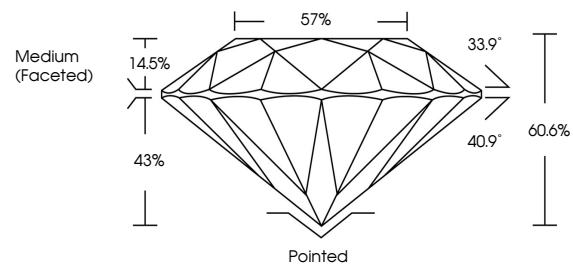
Polish **EXCELLENT**  
Symmetry **EXCELLENT**  
Fluorescence **NONE**  
Inscription(s) **IGI LG586343101**

Comments: This Laboratory Grown Diamond was created by Chemical Vapor Deposition (CVD) growth process and may include post-growth treatment. Type IIa

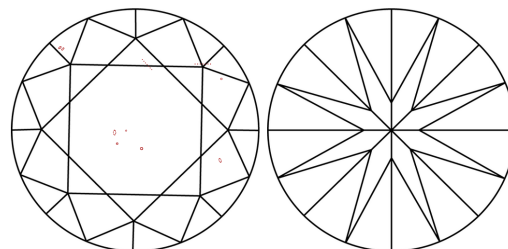
**LABORATORY GROWN DIAMOND REPORT**

**LG586343101**  
Report verification at [igi.org](http://igi.org)

**PROPORTIONS**



**CLARITY CHARACTERISTICS**



**KEY TO SYMBOLS**

Red symbols indicate internal characteristics.  
Green symbols indicate external characteristics.

**LABORATORY GROWN  
DIAMOND REPORT**

**GRADING SCALES**

**CLARITY**

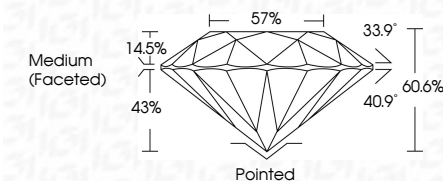
IF	VVS <sup>1-2</sup>	VS <sup>1-2</sup>	SI <sup>1-2</sup>	I <sup>1-3</sup>
Internally Flawless	Very Very Slightly Included	Very Slightly Included	Slightly Included	Included

**COLOR**

D	E	F	G	H	I	J	Faint	Very Light	Light
---	---	---	---	---	---	---	-------	------------	-------

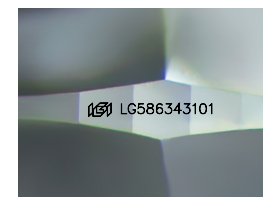
**LABORATORY GROWN DIAMOND REPORT**

June 16, 2023  
IGI Report Number **LG586343101**  
Description **LABORATORY GROWN  
DIAMOND**  
Shape and Cutting Style **ROUND BRILLIANT**  
Measurements **16.30 - 16.39 X 9.91 MM**  
**GRADING RESULTS**  
Carat Weight **16.01 CARATS**  
Color Grade **F**  
Clarity Grade **VS 2**  
Cut Grade **IDEAL**



**ADDITIONAL GRADING INFORMATION**

Polish **EXCELLENT**  
Symmetry **EXCELLENT**  
Fluorescence **NONE**  
Inscription(s) **IGI LG586343101**  
Comments: This Laboratory Grown Diamond was created by Chemical Vapor Deposition (CVD) growth process and may include post-growth treatment. Type IIa



Sample Image Used



**IGI**

June 16, 2023  
IGI Report No **LG586343101**  
**ROUND BRILLIANT**  
16.30 - 16.39 X 9.91 MM  
Carat Weight **16.01 CARATS**  
Color Grade **F**  
Clarity Grade **VS 2**  
Cut Grade **IDEAL**  
Depth **60.6%**  
Table **57%**  
Girdle **Medium (Faceted)**  
Culet **Pointed**  
Polish **EXCELLENT**  
Symmetry **EXCELLENT**  
Fluorescence **NONE**  
Inscriptions(s) **IGI LG586343101**  
Comments: This Laboratory Grown Diamond was created by Chemical Vapor Deposition (CVD) growth process and may include post-growth treatment. Type IIa