



**ELECTRONIC COPY**

LG587303145

Report verification at [igi.org](http://igi.org)

**LABORATORY GROWN DIAMOND REPORT**

July 12, 2023  
IGI Report Number **LG587303145**

Description **LABORATORY GROWN  
DIAMOND**

Shape and Cutting Style **CUSHION MODIFIED BRILLIANT**

Measurements **10.70 X 8.71 X 5.80 MM**

**GRADING RESULTS**

Carat Weight **4.08 CARATS**

Color Grade **F**

Clarity Grade **SI 1**

**ADDITIONAL GRADING INFORMATION**

Polish **EXCELLENT**

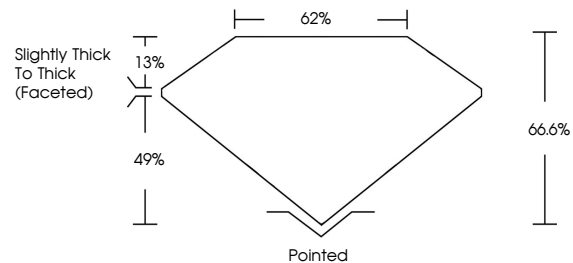
Symmetry **EXCELLENT**

Fluorescence **NONE**

Inscription(s) **IGI LG587303145**

Comments: This Laboratory Grown Diamond was created by Chemical Vapor Deposition (CVD) growth process and may include post-growth treatment. Type IIa

**PROPORTIONS**



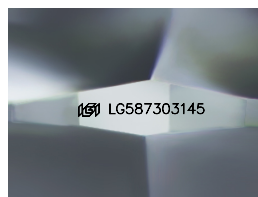
**GRADING SCALES**

**CLARITY**

IF	VVS <sup>1-2</sup>	VS <sup>1-2</sup>	SI <sup>1-2</sup>	I <sup>1-3</sup>
Internally Flawless	Very Very Slightly Included	Very Slightly Included	Slightly Included	Included

**COLOR**

D	E	F	G	H	I	J	Faint	Very Light	Light
---	---	---	---	---	---	---	-------	------------	-------



Sample Image Used

July 12, 2023

IGI Report Number **LG587303145**

Description **LABORATORY GROWN  
DIAMOND**

Shape and Cutting Style **CUSHION MODIFIED  
BRILLIANT**

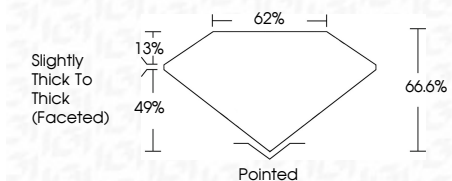
Measurements **10.70 X 8.71 X 5.80 MM**

**GRADING RESULTS**

Carat Weight **4.08 CARATS**

Color Grade **F**

Clarity Grade **SI 1**



**ADDITIONAL GRADING INFORMATION**

Polish **EXCELLENT**

Symmetry **EXCELLENT**

Fluorescence **NONE**

Inscription(s) **IGI LG587303145**

Comments: This Laboratory Grown Diamond was created by Chemical Vapor Deposition (CVD) growth process and may include post-growth treatment. Type IIa



**IGI**



July 12, 2023  
IGI Report No LG587303145  
**CUSHION MODIFIED BRILLIANT**  
10.70 X 8.71 X 5.80 MM

Carat Weight	4.08 CARATS
Color Grade	F
Clarity Grade	SI 1
Depth	66.6%
Table	62%
Graile	Slightly Thick To Thick (Faceted)
Culet	Pointed
Polish	EXCELLENT
Symmetry	EXCELLENT
Fluorescence	NONE
Inscription(s)	IGI LG587303145

Comments: This Laboratory Grown Diamond was created by Chemical Vapor Deposition (CVD) growth process and may include post-growth treatment. Type IIa