

**ELECTRONIC COPY**

## LABORATORY GROWN DIAMOND REPORT

July 6, 2023	
IGI Report Number	LG587307955
Description	LABORATORY GROWN DIAMOND
Shape and Cutting Style	CUT CORNERED RECTANGULAR MODIFIED BRILLIANT
Measurements	8.31 X 6.14 X 4.24 MM

## GRADING RESULTS

Carat Weight	2.06 CARATS
Color Grade	H
Clarity Grade	VS 1

### ADDITIONAL GRADING INFORMATION

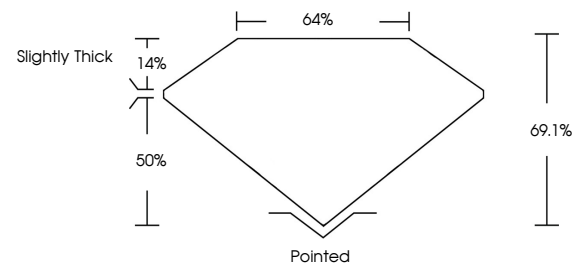
Polish	EXCELLENT
Symmetry	EXCELLENT
Fluorescence	NONE
Inscription(s)	15 LG587307955

Comments: This Laboratory Grown Diamond was created by Chemical Vapor Deposition (CVD) growth process and may include post-growth treatment.  
Type IIa

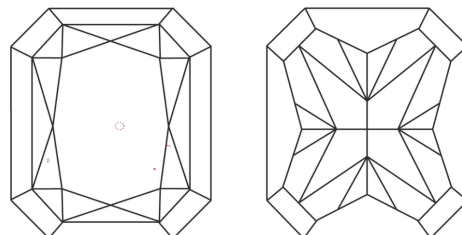
## LABORATORY GROWN DIAMOND REPORT

LG587307955  
Report verification at [igi.org](https://igi.org)

## PROPORTIONS



## CLARITY CHARACTERISTICS



## KEY TO SYMBOLS

Red symbols indicate internal characteristics.  
Green symbols indicate external characteristics.

LABORATORY GROWN  
DIAMOND REPORT

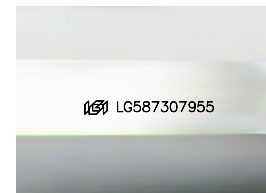
## GRADING SCALES

## CLARITY

IF	VVS <sup>1-2</sup>	VS <sup>1-2</sup>	SI <sup>1-2</sup>	I <sup>1-3</sup>
Internally Flawless	Very Very Slightly Included	Very Slightly Included	Slightly Included	Included

**COLOR**

D E F G H I J Faint Very Light Light



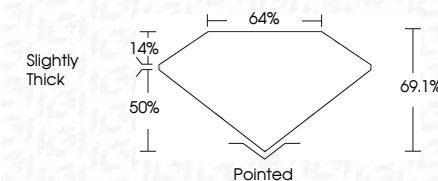
Sample Image Used

## LABORATORY GROWN DIAMOND REPORT

July 6, 2023	
IGI Report Number	LG587307955
Description	LABORATORY GROWN DIAMOND
Shape and Cutting Style	CUT CORNERED RECTANGULAR MODIFIED BRILLIANT
Measurements	8.31 X 6.14 X 4.24 MM

## GRADING RESULTS

Carat Weight	2.06 CARATS
Color Grade	H
Clarity Grade	VS 1



### ADDITIONAL GRADING INFORMATION

Polish	EXCELLENT
Symmetry	EXCELLENT
Fluorescence	NONE
Inscription(s)	(16) LG587307955

Comments: This Laboratory Grown Diamond was created by Chemical Vapor Deposition (CVD) growth process and may include post-growth treatment.  
Type IIa



© IGI 2020, International Gemological Institute

FD - 10 20

**www.igi.org**

THIS DOCUMENT WAS PRODUCED WITH THE FOLLOWING SECURITY MEASURES: SPECIAL DOCUMENT PAPER, INK SCREENS, WATERMARK, BACKGROUND DESIGNS, HOLOGRAM AND OTHER SECURITY FEATURES NOT LISTED AND DO EXCEED DOCUMENT SECURITY INDUSTRY GUIDELINE

July 6, 2023	GI Recd No. LG567307955	2.06 CARATS	H	VS 1	69.1%	64%	Slightly Thick	Pointed	EXCELLENT	EXCELLENT	NONE	691 LG567307955
	GI COVERED RECT. MODIFIED BRILLIANT											
	31.31 X 4.14 X 4.24 MM	Carat Weight	Color Grade	Clarity Grade	Depth	Table	Grade	Culet	Pole	Symmetry	Fluorescence	Inscriptions(s)

Comments: Many Group Diamond was treated by Chemical Vapor Deposition (CVD) growth process and may include post-growth treatment.

Type IIA