



**INTERNATIONAL  
GEMOLOGICAL  
INSTITUTE**

**ELECTRONIC COPY**

**LABORATORY GROWN  
DIAMOND REPORT**

**LG587317475**

**IGI LABORATORY GROWN  
DIAMOND ID REPORT**

June 26, 2023

IGI Report Number **LG587317475**

**SQUARE EMERALD CUT**

**5.48 X 5.45 X 3.66 MM**

|                |             |
|----------------|-------------|
| Carat Weight   | 0.98 CARAT  |
| Color Grade    | G           |
| Clarity Grade  | VS 1        |
| Polish         | EXCELLENT   |
| Symmetry       | EXCELLENT   |
| Fluorescence   | NONE        |
| Inscription(s) | LG587317475 |

Comments: This Laboratory Grown Diamond was created by Chemical Vapor Deposition (CVD) growth process and may include post-growth treatment. Type Ila

**LABORATORY GROWN DIAMOND REPORT**

**IGI LABORATORY GROWN DIAMOND IDENTIFICATION REPORT**

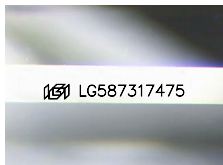
June 26, 2023

IGI Report Number **LG587317475**

Description **LABORATORY GROWN DIAMOND**

Shape and Cutting Style **SQUARE EMERALD CUT**

Measurements **5.48 X 5.45 X 3.66 MM**



Sample Image Used

**GRADING RESULTS**

Carat Weight **0.98 CARAT**

Color Grade **G**

Clarity Grade **VS 1**

**ADDITIONAL GRADING INFORMATION**

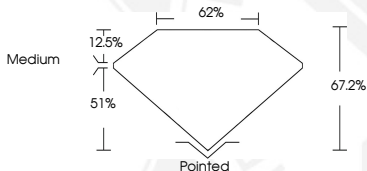
Polish **EXCELLENT**

Symmetry **EXCELLENT**

Fluorescence **NONE**

Inscription(s) **LG587317475**

Comments: This Laboratory Grown Diamond was created by Chemical Vapor Deposition (CVD) growth process and may include post-growth treatment. Type Ila



**IGI LABORATORY GROWN  
DIAMOND ID REPORT**

June 26, 2023

IGI Report Number **LG587317475**

**SQUARE EMERALD CUT**

**5.48 X 5.45 X 3.66 MM**

|                |             |
|----------------|-------------|
| Carat Weight   | 0.98 CARAT  |
| Color Grade    | G           |
| Clarity Grade  | VS 1        |
| Polish         | EXCELLENT   |
| Symmetry       | EXCELLENT   |
| Fluorescence   | NONE        |
| Inscription(s) | LG587317475 |

Comments: This Laboratory Grown Diamond was created by Chemical Vapor Deposition (CVD) growth process and may include post-growth treatment. Type Ila

THIS DOCUMENT WAS PRODUCED WITH THE FOLLOWING SECURITY MEASURES: SPECIAL DOCUMENT PAPER, INK SCREENS, WATERMARK, BACKGROUND DESIGN, HOLOGRAM AND OTHER SECURITY FEATURES NOT LISTED AND DO EXCEED DOCUMENT SECURITY INDUSTRY GUIDELINES.

For terms & conditions and to verify this report, please visit [www.igi.org](http://www.igi.org)