



ELECTRONIC COPY

LABORATORY GROWN DIAMOND REPORT

August 14, 2023	
IGI Report Number	LG587324846
Description	LABORATORY GROWN DIAMOND
Shape and Cutting Style	ROUND BRILLIANT
Measurements	8.11 - 8.16 X 4.90 MM

GRADING RESULTS

Carat Weight	2.00 CARATS
Color Grade	J
Clarity Grade	SI 2
Cut Grade	VERY GOOD

ADDITIONAL GRADING INFORMATION

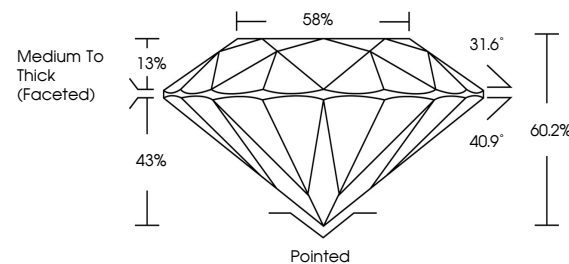
Polish	VERY GOOD
Symmetry	VERY GOOD
Fluorescence	NONE
Inscription(s)	 LG587324846

LABORATORY GROWN DIAMOND REPORT

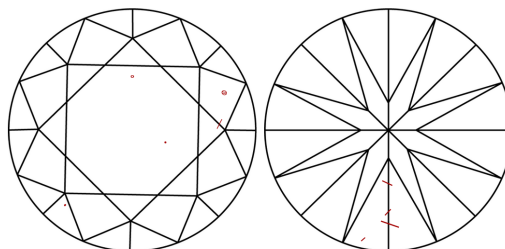
LG587324846

Report verification at igi.org

PROPORTIONS



CLARITY CHARACTERISTICS



KEY TO SYMBOLS

Red symbols indicate internal characteristics.
Green symbols indicate external characteristics.

LABORATORY GROWN
DIAMOND REPORT

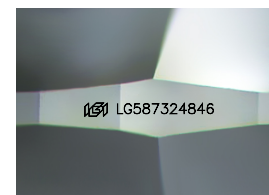
GRADING SCALES

CLARITY

IF	VVS ¹⁻²	VS ¹⁻²	SI ¹⁻²	I ¹⁻³
Internally Flawless	Very Very Slightly Included	Very Slightly Included	Slightly Included	Included

COLOR

D E F G H I J Faint Very Light Light



Sample Image Used



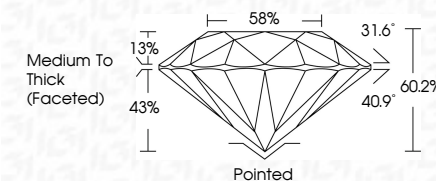
© IGI 2020, International Gemological Institute

FD - 10 20



LABORATORY GROWN DIAMOND REPORT

August 14, 2023	
IGI Report Number	LG587324846
Description	LABORATORY GROWN DIAMOND
Shape and Cutting Style	ROUND BRILLIANT
Measurements	8.11 - 8.16 X 4.90 MM
GRADING RESULTS	
Carat Weight	2.00 CARATS
Color Grade	J
Clarity Grade	SI 2
Cut Grade	VERY GOOD



ADDITIONAL GRADING INFORMATION

Polish	VERY GOOD
Symmetry	VERY GOOD
Fluorescence	NONE
Inscription(s)	151 LG587324846

August 14, 2023
GI Report No LG587324846
ROUND BRILLIANT

[illegible]