



**ELECTRONIC COPY**

## LABORATORY GROWN DIAMOND REPORT

|                         |  |
|-------------------------|--|
| June 27, 2023           |  |
| IGI Report Number       | LG587328154                                    |
| Description             | LABORATORY GROWN<br>DIAMOND                    |
| Shape and Cutting Style | CUT CORNERED RECTANGULAR<br>MODIFIED BRILLIANT |
| Measurements            | 9.21 X 6.94 X 4.75 MM                          |

## GRADING RESULTS

|               |             |
|---------------|-------------|
| Carat Weight  | 3.00 CARATS |
| Color Grade   | F           |
| Clarity Grade | SI 1        |

### ADDITIONAL GRADING INFORMATION

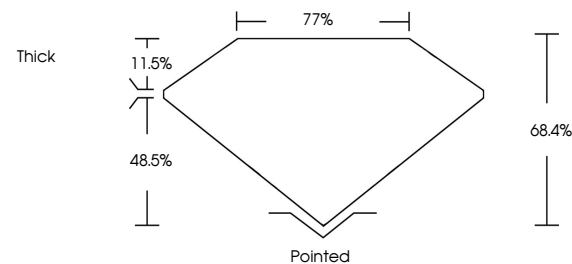
|                |                |
|----------------|----------------|
| Polish         | EXCELLENT      |
| Symmetry       | EXCELLENT      |
| Fluorescence   | NONE           |
| Inscription(s) | 15 LG587328154 |

Comments: This Laboratory Grown Diamond was created by Chemical Vapor Deposition (CVD) growth process and may include post-growth treatment.  
Type IIa

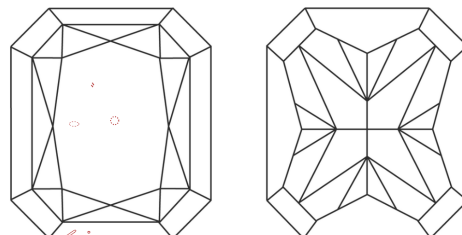
## LABORATORY GROWN DIAMOND REPORT

LG587328154  
Report verification at [igi.org](https://igi.org)

## PROPORTIONS



## CLARITY CHARACTERISTICS



## KEY TO SYMBOLS

Red symbols indicate internal characteristics.  
Green symbols indicate external characteristics.

LABORATORY GROWN  
DIAMOND REPORT

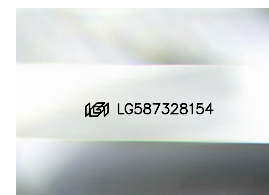
## GRADING SCALES

## CLARITY

| IF                     | VVS <sup>1-2</sup>             | VS <sup>1-2</sup>         | SI <sup>1-2</sup>    | I <sup>1-3</sup> |
|------------------------|--------------------------------|---------------------------|----------------------|------------------|
| Internally<br>Flawless | Very Very<br>Slightly Included | Very<br>Slightly Included | Slightly<br>Included | Included         |

**COLOR**

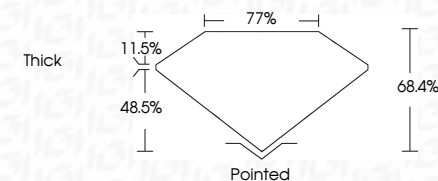
D E F G H I J Faint Very Light Light



Sample Image Used



|                         |   |
|-------------------------|---|
| June 27, 2023           |   |
| IGI Report Number       | LG587328154                                       |
| Description             | LABORATORY GROWN<br>DIAMOND                       |
| Shape and Cutting Style | CUT CORNERED<br>RECTANGULAR MODIFIED<br>BRILLIANT |
| Measurements            | 9.21 X 6.94 X 4.75 MM                             |
| <b>GRADING RESULTS</b>  |   |
| Carat Weight            | 3.00 CARATS                                       |
| Color Grade             | F   |
| Clarity Grade           | SI 1  |



### ADDITIONAL GRADING INFORMATION

|   |                            |
|---|----------------------------|
| Polish  | EXCELLENT                  |
| Symmetry  | EXCELLENT                  |
| Fluorescence  | NONE                       |
| Inscription(s)  | <del>163</del> LG587328154 |
| <p>Comments: This Laboratory Grown Diamond was created by Chemical Vapor Deposition (CVD) growth process and may include post-growth treatment.</p> <p>Type IIa</p> |                            |



© IGI 2020, International Gemological Institute

FD - 10 20

**www.igi.org**

THIS DOCUMENT WAS PRODUCED WITH THE FOLLOWING SECURITY MEASURES: SPECIAL DOCUMENT PAPER, INK SCREENS, WATERMARK, BACKGROUND DESIGNS, HOLOGRAM AND OTHER SECURITY FEATURES NOT LISTED AND DO EXCEED DOCUMENT SECURITY INDUSTRY GUIDELINES

|                                       |                           |
|---------------------------------------|---------------------------|
| June 27, 2023                         | GI Report No. LG587328154 |
| CUT CORNERED RECT. MODIFIED BRILLIANT |                           |
| 3.00 CARATS                           |                           |
| F                                     |                           |
| S I 1                                 |                           |
| 68.4%                                 |                           |
| 77%                                   |                           |
| Thick                                 |                           |
|                                       |                           |
| Pointed                               |                           |
| EXCELLENT                             |                           |
| EXCELLENT                             |                           |
| NONE                                  |                           |
| 1681 LG587328154                      |                           |

Comments: This Fancy Green Diamond was treated by Chemical Vapor Deposition (CVD) growth process and may include post-growth treatment.

Type IIG