



**ELECTRONIC COPY**

**LABORATORY GROWN DIAMOND REPORT**

LG587391051

Report verification at igi.org

**LABORATORY GROWN  
DIAMOND REPORT**

**LABORATORY GROWN DIAMOND REPORT**

**LABORATORY GROWN DIAMOND REPORT**

June 26, 2023  
IGI Report Number **LG587391051**  
Description **LABORATORY GROWN  
DIAMOND**  
Shape and Cutting Style **CUSHION BRILLIANT**  
Measurements **8.35 X 7.65 X 5.00 MM**

**GRADING RESULTS**

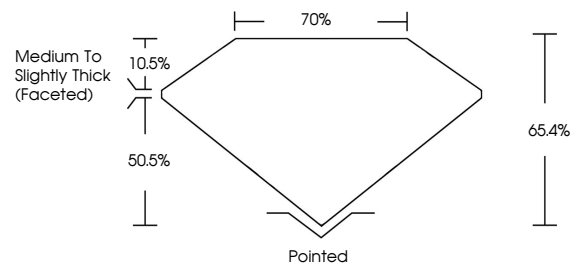
Carat Weight **3.02 CARATS**  
Color Grade **G**  
Clarity Grade **VS 1**

**ADDITIONAL GRADING INFORMATION**

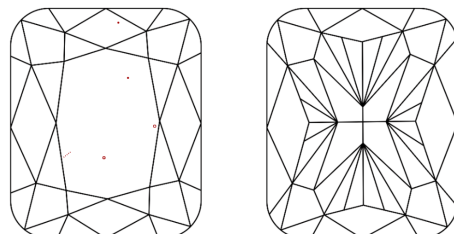
Polish **EXCELLENT**  
Symmetry **EXCELLENT**  
Fluorescence **NONE**  
Inscription(s) **IGI LG587391051**

Comments: This Laboratory Grown Diamond was created by Chemical Vapor Deposition (CVD) growth process and may include post-growth treatment. Type IIa

**PROPORTIONS**



**CLARITY CHARACTERISTICS**



**KEY TO SYMBOLS**

Red symbols indicate internal characteristics.  
Green symbols indicate external characteristics.

**GRADING SCALES**

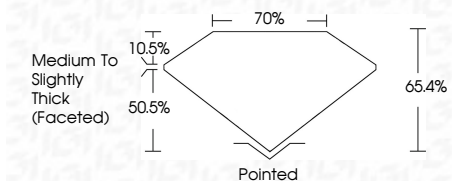
**CLARITY**

IF	VVS <sup>1-2</sup>	VS <sup>1-2</sup>	SI <sup>1-2</sup>	I <sup>1-3</sup>
Internally Flawless	Very Very Slightly Included	Very Slightly Included	Slightly Included	Included

**COLOR**

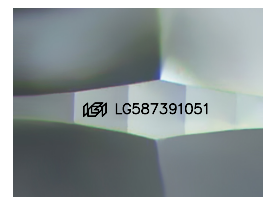
D	E	F	G	H	I	J	Faint	Very Light	Light
---	---	---	---	---	---	---	-------	------------	-------

June 26, 2023  
IGI Report Number **LG587391051**  
Description **LABORATORY GROWN  
DIAMOND**  
Shape and Cutting Style **CUSHION BRILLIANT**  
Measurements **8.35 X 7.65 X 5.00 MM**  
**GRADING RESULTS**  
Carat Weight **3.02 CARATS**  
Color Grade **G**  
Clarity Grade **VS 1**



**ADDITIONAL GRADING INFORMATION**

Polish **EXCELLENT**  
Symmetry **EXCELLENT**  
Fluorescence **NONE**  
Inscription(s) **IGI LG587391051**  
Comments: This Laboratory Grown Diamond was created by Chemical Vapor Deposition (CVD) growth process and may include post-growth treatment. Type IIa



Sample Image Used



**IGI**

June 26, 2023  
IGI Report No LG587391051  
**CUSHION BRILLIANT**  
8.35 X 7.65 X 5.00 MM  
Carat Weight **3.02 CARATS**  
Color Grade **G**  
Clarity Grade **VS 1**  
Depth **65.4%**  
Table **70%**  
Girdle **Medium to Slightly Thick (Faceted)**  
Culet **Pointed**  
Polish **EXCELLENT**  
Symmetry **EXCELLENT**  
Fluorescence **NONE**  
Inscription(s) **IGI LG587391051**

Comments: This Laboratory Grown Diamond was created by Chemical Vapor Deposition (CVD) growth process and may include post-growth treatment. Type IIa