



ELECTRONIC COPY

LABORATORY GROWN DIAMOND REPORT

LG588335448

Report verification at igi.org

**LABORATORY GROWN
DIAMOND REPORT**

LABORATORY GROWN DIAMOND REPORT

LABORATORY GROWN DIAMOND REPORT

June 28, 2023
IGI Report Number **LG588335448**
Description **LABORATORY GROWN
DIAMOND**
Shape and Cutting Style **ROUND BRILLIANT**
Measurements **12.31 - 12.37 X 7.61 MM**

GRADING RESULTS

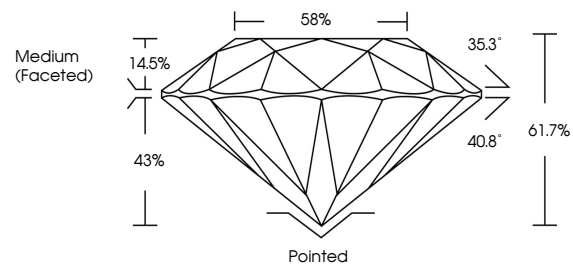
Carat Weight **7.16 CARATS**
Color Grade **G**
Clarity Grade **VS 1**
Cut Grade **IDEAL**

ADDITIONAL GRADING INFORMATION

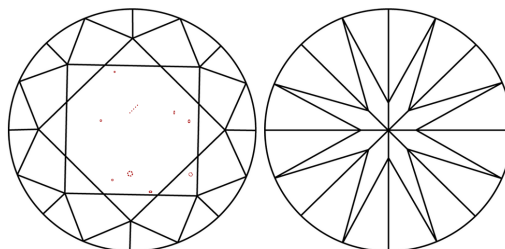
Polish **EXCELLENT**
Symmetry **EXCELLENT**
Fluorescence **NONE**
Inscription(s) **LG588335448**

Comments: HEARTS & ARROWS
This Laboratory Grown Diamond was created by
Chemical Vapor Deposition (CVD) growth process and
may include post-growth treatment.
Type IIa

PROPORTIONS



CLARITY CHARACTERISTICS



KEY TO SYMBOLS

Red symbols indicate internal characteristics.
Green symbols indicate external characteristics.



GRADING SCALES

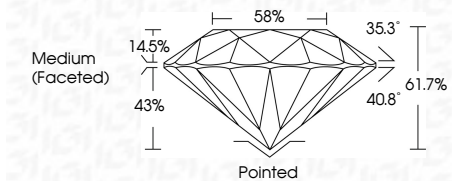
CLARITY

IF	VVS ¹⁻²	VS ¹⁻²	SI ¹⁻²	I ¹⁻³
Internally Flawless	Very Very Slightly Included	Very Slightly Included	Slightly Included	Included

COLOR

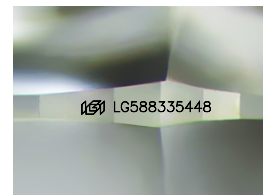
D	E	F	G	H	I	J	Faint	Very Light	Light
---	---	---	---	---	---	---	-------	------------	-------

June 28, 2023
IGI Report Number **LG588335448**
Description **LABORATORY GROWN
DIAMOND**
Shape and Cutting Style **ROUND BRILLIANT**
Measurements **12.31 - 12.37 X 7.61 MM**
GRADING RESULTS
Carat Weight **7.16 CARATS**
Color Grade **G**
Clarity Grade **VS 1**
Cut Grade **IDEAL**



ADDITIONAL GRADING INFORMATION

Polish **EXCELLENT**
Symmetry **EXCELLENT**
Fluorescence **NONE**
Inscription(s) **LG588335448**
Comments: HEARTS & ARROWS
This Laboratory Grown Diamond was created by
Chemical Vapor Deposition (CVD) growth process and
may include post-growth treatment.
Type IIa



Sample Image Used



IGI

June 28, 2023
IGI Report No **LG588335448**
ROUND BRILLIANT
12.31 - 12.37 X 7.61 MM
Carat Weight **7.16 CARATS**
Color Grade **G**
Clarity Grade **VS 1**
Cut Grade **IDEAL**
Depth **61.7%**
Table **58%**
Girdle **Medium (Faceted)**
Culet **Pointed**
Polish **EXCELLENT**
Symmetry **EXCELLENT**
Fluorescence **NONE**
Inscriptions(s) **LG588335448**
Comments: HEARTS & ARROWS
This Laboratory Grown Diamond was
created by Chemical Vapor Deposition
(CVD) growth process and may include
post-growth treatment.
Type IIa