



**INTERNATIONAL  
GEMOLOGICAL  
INSTITUTE**

**ELECTRONIC COPY**

**LABORATORY GROWN  
DIAMOND REPORT**

**LG588336450**

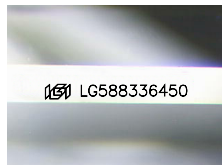
**IGI LABORATORY GROWN  
DIAMOND ID REPORT**

July 1, 2023  
IGI Report Number **LG588336450**  
**CUT CORNERED RECTANGULAR  
MODIFIED BRILLIANT**  
**6.34 X 4.99 X 3.10 MM**  
Carat Weight 0.81 CARAT  
Color Grade G  
Clarity Grade VVS 1  
Polish VERY GOOD  
Symmetry VERY GOOD  
Fluorescence NONE  
Inscription(s) LG588336450

**LABORATORY GROWN DIAMOND REPORT**

**IGI LABORATORY GROWN DIAMOND IDENTIFICATION REPORT**

July 1, 2023  
IGI Report Number LG588336450  
Description LABORATORY GROWN DIAMOND  
Shape and Cutting Style CUT CORNERED RECTANGULAR MODIFIED  
BRILLIANT  
Measurements 6.34 X 4.99 X 3.10 MM



Sample Image Used

Comments: As Grown - No indication of post-growth treatment. This Laboratory Grown Diamond was created by High Pressure High Temperature (HPHT) growth process. Type II Faint Blue

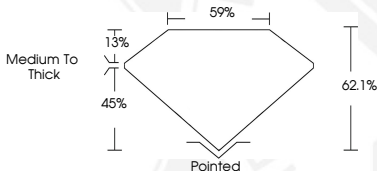
**GRADING RESULTS**

Carat Weight 0.81 CARAT  
Color Grade G  
Clarity Grade VVS 1

**ADDITIONAL GRADING INFORMATION**

Polish VERY GOOD  
Symmetry VERY GOOD  
Fluorescence NONE  
Inscription(s) LG588336450

Comments: As Grown - No indication of post-growth treatment. This Laboratory Grown Diamond was created by High Pressure High Temperature (HPHT) growth process.  
Type II  
Faint Blue



**IGI LABORATORY GROWN  
DIAMOND ID REPORT**

July 1, 2023  
IGI Report Number **LG588336450**  
**CUT CORNERED RECTANGULAR  
MODIFIED BRILLIANT**  
**6.34 X 4.99 X 3.10 MM**  
Carat Weight 0.81 CARAT  
Color Grade G  
Clarity Grade VVS 1  
Polish VERY GOOD  
Symmetry VERY GOOD  
Fluorescence NONE  
Inscription(s) LG588336450

Comments: As Grown - No indication of post-growth treatment. This Laboratory Grown Diamond was created by High Pressure High Temperature (HPHT) growth process. Type II Faint Blue

THIS DOCUMENT WAS PRODUCED WITH THE FOLLOWING SECURITY MEASURES: SPECIAL DOCUMENT PAPER, INK SCREENS, WATERMARK, BACKGROUND DESIGN, HOLOGRAM AND OTHER SECURITY FEATURES NOT LISTED AND DO EXCEED DOCUMENT SECURITY INDUSTRY GUIDELINES.

For terms & conditions and to verify this report, please visit [www.igi.org](http://www.igi.org)