



ELECTRONIC COPY

LABORATORY GROWN DIAMOND REPORT

July 10, 2023
 IGI Report Number **LG588342153**
 Description **LABORATORY GROWN
DIAMOND**
 Shape and Cutting Style **CUT CORNERED RECTANGULAR
MODIFIED BRILLIANT**
 Measurements **8.35 X 6.18 X 4.22 MM**

GRADING RESULTS

Carat Weight **2.16 CARATS**
 Color Grade **FANCY VIVID YELLOW**
 Clarity Grade **VVS 2**

ADDITIONAL GRADING INFORMATION

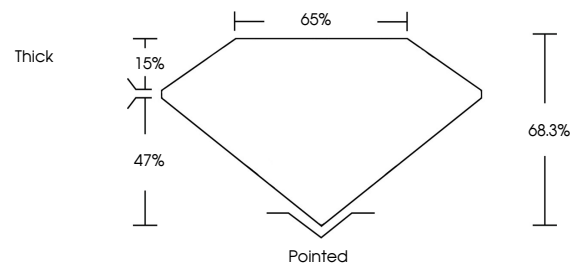
Polish **EXCELLENT**
 Symmetry **VERY GOOD**
 Fluorescence **NONE**
 Inscription(s) **IGI LG588342153**

Comments: As Grown - No indication of post-growth treatment.
 This Laboratory Grown Diamond was created by High Pressure High Temperature (HPHT) growth process.

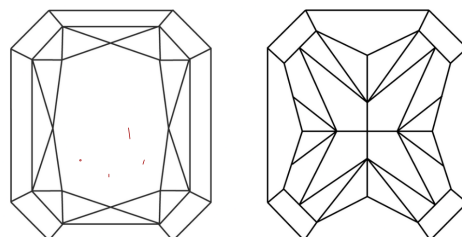
LABORATORY GROWN DIAMOND REPORT

LG588342153
 Report verification at igi.org

PROPORTIONS



CLARITY CHARACTERISTICS



KEY TO SYMBOLS

Red symbols indicate internal characteristics.
 Green symbols indicate external characteristics.

**LABORATORY GROWN
DIAMOND REPORT**

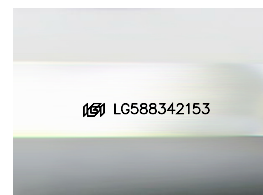
GRADING SCALES

CLARITY

IF	VVS ¹⁻²	VS ¹⁻²	SI ¹⁻²	I ¹⁻³
Internally Flawless	Very Very Slightly Included	Very Slightly Included	Slightly Included	Included

COLOR

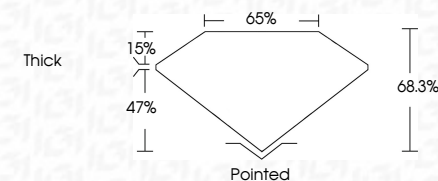
D	E	F	G	H	I	J	Faint	Very Light	Light
Light Tint	Fancy Light	Fancy	Fancy Intense	Fancy Vivid					



Sample Image Used

LABORATORY GROWN DIAMOND REPORT

July 10, 2023
 IGI Report Number **LG588342153**
 Description **LABORATORY GROWN
DIAMOND**
 Shape and Cutting Style **CUT CORNERED
RECTANGULAR MODIFIED
BRILLIANT**
 Measurements **8.35 X 6.18 X 4.22 MM**
GRADING RESULTS
 Carat Weight **2.16 CARATS**
 Color Grade **FANCY VIVID YELLOW**
 Clarity Grade **VVS 2**



ADDITIONAL GRADING INFORMATION

Polish **EXCELLENT**
 Symmetry **VERY GOOD**
 Fluorescence **NONE**
 Inscription(s) **IGI LG588342153**
 Comments: As Grown - No indication of post-growth treatment.
 This Laboratory Grown Diamond was created by High Pressure High Temperature (HPHT) growth process.



IGI



July 10, 2023
 IGI Report No **LG588342153**
CUT CORNERED RECT. MODIFIED BRILLIANT
8.35 X 6.18 X 4.22 MM
 Carat Weight **2.16 CARATS**
 Color Grade **FANCY VIVID YELLOW**
 Clarity Grade **VVS 2**
 Depth **68.3%**
 Table **65%**
 Girdle **Thick**
 Culet **Pointed**
 Polish **EXCELLENT**
 Symmetry **VERY GOOD**
 Fluorescence **NONE**
 Inscription(s) **IGI LG588342153**

Comments: As Grown - No indication of post-growth treatment.
 This Laboratory Grown Diamond was created by High Pressure High Temperature (HPHT) growth process.