



ELECTRONIC COPY

LABORATORY GROWN DIAMOND REPORT

July 10, 2023
 IGI Report Number **LG588342155**
 Description **LABORATORY GROWN
DIAMOND**
 Shape and Cutting Style **CUSHION BRILLIANT**
 Measurements **8.19 X 6.72 X 4.54 MM**

GRADING RESULTS

Carat Weight **2.20 CARATS**
 Color Grade **FANCY VIVID YELLOW**
 Clarity Grade **VVS 2**

ADDITIONAL GRADING INFORMATION

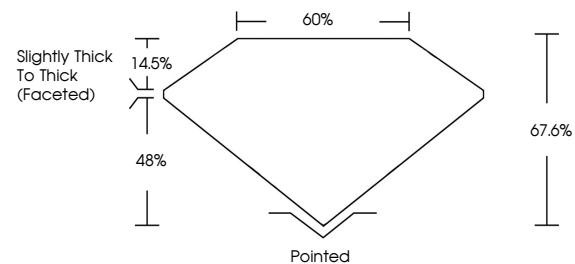
Polish **VERY GOOD**
 Symmetry **VERY GOOD**
 Fluorescence **NONE**
 Inscription(s) **IGI LG588342155**

Comments: As Grown - No indication of post-growth treatment.
 This Laboratory Grown Diamond was created by High Pressure High Temperature (HPHT) growth process.

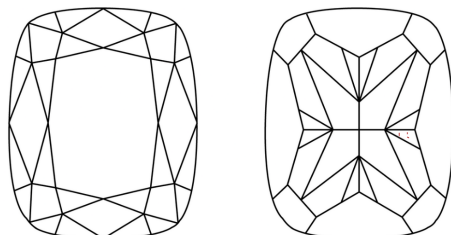
LABORATORY GROWN DIAMOND REPORT

LG588342155
 Report verification at igi.org

PROPORTIONS



CLARITY CHARACTERISTICS



KEY TO SYMBOLS

Red symbols indicate internal characteristics.
 Green symbols indicate external characteristics.

**LABORATORY GROWN
DIAMOND REPORT**

GRADING SCALES

CLARITY

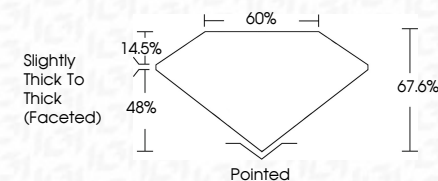
IF	VVS ¹⁻²	VS ¹⁻²	SI ¹⁻²	I ¹⁻³
Internally Flawless	Very Very Slightly Included	Very Slightly Included	Slightly Included	Included

COLOR

D	E	F	G	H	I	J	Faint	Very Light	Light
Light Tint	Fancy Light	Fancy	Fancy Intense	Fancy Vivid					

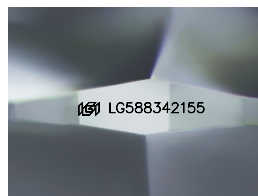
LABORATORY GROWN DIAMOND REPORT

July 10, 2023
 IGI Report Number **LG588342155**
 Description **LABORATORY GROWN
DIAMOND**
 Shape and Cutting Style **CUSHION BRILLIANT**
 Measurements **8.19 X 6.72 X 4.54 MM**
GRADING RESULTS
 Carat Weight **2.20 CARATS**
 Color Grade **FANCY VIVID YELLOW**
 Clarity Grade **VVS 2**



ADDITIONAL GRADING INFORMATION

Polish **VERY GOOD**
 Symmetry **VERY GOOD**
 Fluorescence **NONE**
 Inscription(s) **IGI LG588342155**
 Comments: As Grown - No indication of post-growth treatment.
 This Laboratory Grown Diamond was created by High Pressure High Temperature (HPHT) growth process.



Sample Image Used



IGI

July 10, 2023
 IGI Report No **LG588342155**
CUSHION BRILLIANT
8.19 X 6.72 X 4.54 MM
 Carat Weight **2.20 CARATS**
 Color Grade **FANCY VIVID YELLOW**
 Clarity Grade **VVS 2**
 Depth **67.6%**
 Table **14.5%**
 Girdle **Slightly Thick To Thick (Faceted)**
 Culet **Pointed**
 Polish **VERY GOOD**
 Symmetry **VERY GOOD**
 Fluorescence **NONE**
 Inscription(s) **IGI LG588342155**

Comments: As Grown - No indication of post-growth treatment.
 This Laboratory Grown Diamond was created by High Pressure High Temperature (HPHT) growth process.