



**INTERNATIONAL  
GEMOLOGICAL  
INSTITUTE**

**ELECTRONIC COPY**

**LABORATORY GROWN  
DIAMOND REPORT**

**LG588342770**

**IGI LABORATORY GROWN  
DIAMOND ID REPORT**

July 12, 2023  
IGI Report Number **LG588342770**  
**ROUND BRILLIANT**  
**4.59 - 4.62 X 2.84 MM**  
Carat Weight 0.37 CARAT  
Color Grade FANCY INTENSE  
YELLOW  
Clarity Grade IF.  
Cut Grade IDEAL  
Polish EXCELLENT  
Symmetry EXCELLENT  
Fluorescence NONE  
Inscription(s) LG588342770

Comments: This Laboratory Grown Diamond was created by High Pressure High Temperature (HPHT) growth process. Indications of post-growth treatment.  
Secondary color: Brown

**LABORATORY GROWN DIAMOND REPORT**

**IGI LABORATORY GROWN DIAMOND IDENTIFICATION REPORT**

July 12, 2023  
IGI Report Number LG588342770  
Description LABORATORY GROWN DIAMOND  
Shape and Cutting Style ROUND BRILLIANT  
Measurements 4.59 - 4.62 X 2.84 MM

**GRADING RESULTS**

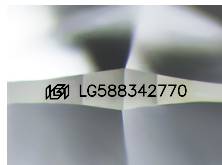
Carat Weight 0.37 CARAT  
Color Grade FANCY INTENSE YELLOW  
Clarity Grade INTERNALLY FLAWLESS  
Cut Grade IDEAL

**ADDITIONAL GRADING INFORMATION**

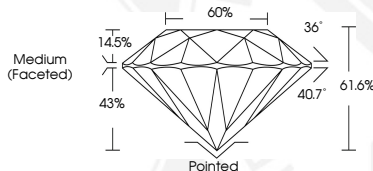
Polish EXCELLENT  
Symmetry EXCELLENT  
Fluorescence NONE  
Inscription(s) LG588342770

Comments: This Laboratory Grown Diamond was created by High Pressure High Temperature (HPHT) growth process. Indications of post-growth treatment.

Secondary color: Brown



Sample Image Used



**IGI LABORATORY GROWN  
DIAMOND ID REPORT**

July 12, 2023  
IGI Report Number **LG588342770**  
**ROUND BRILLIANT**  
**4.59 - 4.62 X 2.84 MM**  
Carat Weight 0.37 CARAT  
Color Grade FANCY INTENSE  
YELLOW  
Clarity Grade IF.  
Cut Grade IDEAL  
Polish EXCELLENT  
Symmetry EXCELLENT  
Fluorescence NONE  
Inscription(s) LG588342770

Comments: This Laboratory Grown Diamond was created by High Pressure High Temperature (HPHT) growth process. Indications of post-growth treatment.  
Secondary color: Brown



THIS DOCUMENT WAS PRODUCED WITH THE FOLLOWING SECURITY MEASURES: SPECIAL DOCUMENT PAPER, INK SCREENS, WATERMARK, BACKGROUND DESIGN, HOLOGRAM AND OTHER SECURITY FEATURES NOT LISTED AND DO EXCEED DOCUMENT SECURITY INDUSTRY GUIDELINES.

For terms & conditions and to verify this report, please visit [www.igi.org](http://www.igi.org)