



**INTERNATIONAL  
GEMOLOGICAL  
INSTITUTE**

**ELECTRONIC COPY**

**LABORATORY GROWN  
DIAMOND REPORT**

**LG588346017**

**IGI LABORATORY GROWN  
DIAMOND ID REPORT**

July 17, 2023  
IGI Report Number **LG588346017**  
**CUT CORNERED RECTANGULAR  
MODIFIED BRILLIANT**  
**6.87 X 4.74 X 3.26 MM**

Carat Weight 0.91 CARAT  
Color Grade G  
Clarity Grade VS 1  
Polish EXCELLENT  
Symmetry EXCELLENT  
Fluorescence NONE  
Inscription(s) LG588346017

Comments: This Laboratory Grown Diamond was created by Chemical Vapor Deposition (CVD) growth process and may include post-growth treatment. Type Ila

**LABORATORY GROWN DIAMOND REPORT**

**IGI LABORATORY GROWN DIAMOND IDENTIFICATION REPORT**

July 17, 2023  
IGI Report Number LG588346017  
Description LABORATORY GROWN DIAMOND  
Shape and Cutting Style CUT CORNERED RECTANGULAR MODIFIED BRILLIANT  
Measurements 6.87 X 4.74 X 3.26 MM

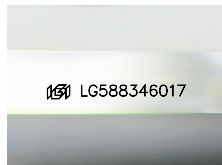
**GRADING RESULTS**

Carat Weight 0.91 CARAT  
Color Grade G  
Clarity Grade VS 1

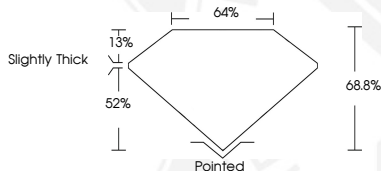
**ADDITIONAL GRADING INFORMATION**

Polish EXCELLENT  
Symmetry EXCELLENT  
Fluorescence NONE  
Inscription(s) LG588346017

Comments: This Laboratory Grown Diamond was created by Chemical Vapor Deposition (CVD) growth process and may include post-growth treatment.  
Type Ila



Sample Image Used



**IGI LABORATORY GROWN  
DIAMOND ID REPORT**

July 17, 2023  
IGI Report Number **LG588346017**  
**CUT CORNERED RECTANGULAR  
MODIFIED BRILLIANT**  
**6.87 X 4.74 X 3.26 MM**

Carat Weight 0.91 CARAT  
Color Grade G  
Clarity Grade VS 1  
Polish EXCELLENT  
Symmetry EXCELLENT  
Fluorescence NONE  
Inscription(s) LG588346017

Comments: This Laboratory Grown Diamond was created by Chemical Vapor Deposition (CVD) growth process and may include post-growth treatment. Type Ila



THIS DOCUMENT WAS PRODUCED WITH THE FOLLOWING SECURITY MEASURES: SPECIAL DOCUMENT PAPER, INK SCREENS, WATERMARK, BACKGROUND DESIGN, HOLOGRAM AND OTHER SECURITY FEATURES NOT LISTED AND DO EXCEED DOCUMENT SECURITY INDUSTRY GUIDELINES.

For terms & conditions and to verify this report, please visit [www.igi.org](http://www.igi.org)