



**ELECTRONIC COPY**

LABORATORY GROWN DIAMOND REPORT

LG588348523

Report verification at [igi.org](http://igi.org)

LABORATORY GROWN  
DIAMOND REPORT

LABORATORY GROWN DIAMOND REPORT

LABORATORY GROWN DIAMOND REPORT

August 3, 2023  
 IGI Report Number **LG588348523**  
 Description **LABORATORY GROWN  
DIAMOND**  
 Shape and Cutting Style **CUSHION MODIFIED BRILLIANT**  
 Measurements **10.66 X 9.42 X 6.62 MM**

**GRADING RESULTS**

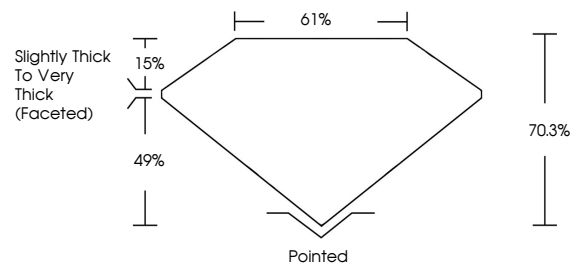
Carat Weight **6.06 CARATS**  
 Color Grade **FANCY VIVID PINK**  
 Clarity Grade **VS 2**

**ADDITIONAL GRADING INFORMATION**

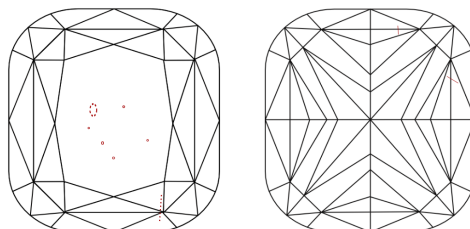
Polish **EXCELLENT**  
 Symmetry **EXCELLENT**  
 Fluorescence **SLIGHT**  
 Inscription(s)  **LG588348523**

Comments: This Laboratory Grown Diamond was created by Chemical Vapor Deposition (CVD) growth process.  
 Indications of post-growth treatment.

**PROPORTIONS**



**CLARITY CHARACTERISTICS**



**KEY TO SYMBOLS**

Red symbols indicate internal characteristics.  
 Green symbols indicate external characteristics.

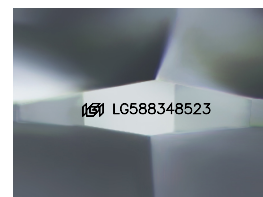
**GRADING SCALES**

**CLARITY**

IF	VVS <sup>1-2</sup>	VS <sup>1-2</sup>	SI <sup>1-2</sup>	I <sup>1-3</sup>
Internally Flawless	Very Very Slightly Included	Very Slightly Included	Slightly Included	Included

**COLOR**

D	E	F	G	H	I	J	Faint	Very Light	Light
Light Tint	Fancy Light	Fancy	Fancy Intense	Fancy Vivid					



Sample Image Used

August 3, 2023  
 IGI Report Number **LG588348523**  
 Description **LABORATORY GROWN  
DIAMOND**  
 Shape and Cutting Style **CUSHION MODIFIED  
BRILLIANT**  
 Measurements **10.66 X 9.42 X 6.62 MM**

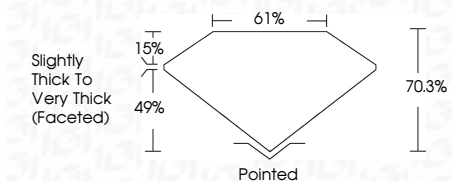
**GRADING RESULTS**

Carat Weight **6.06 CARATS**  
 Color Grade **FANCY VIVID PINK**  
 Clarity Grade **VS 2**

**ADDITIONAL GRADING INFORMATION**

Polish **EXCELLENT**  
 Symmetry **EXCELLENT**  
 Fluorescence **SLIGHT**  
 Inscription(s)  **LG588348523**

Comments: This Laboratory Grown Diamond was created by Chemical Vapor Deposition (CVD) growth process.  
 Indications of post-growth treatment.



**IGI**

August 3, 2023  
 IGI Report No LG588348523  
**CUSHION MODIFIED BRILLIANT**  
 10.66 X 9.42 X 6.62 MM  
 Carat Weight **6.06 CARATS**  
 Color Grade **FANCY VIVID PINK**  
 Clarity Grade **VS 2**  
 Depth **70.3%**  
 Table **61%**  
 Girdle **Slightly Thick To Very Thick (Faceted)**  
 Culet **Pointed**  
 Polish **EXCELLENT**  
 Symmetry **EXCELLENT**  
 Fluorescence **SLIGHT**  
 Inscription(s)  **LG588348523**  
 Comments: This Laboratory Grown Diamond was created by Chemical Vapor Deposition (CVD) growth process.  
 Indications of post-growth treatment.