



**ELECTRONIC COPY**

**LABORATORY GROWN DIAMOND REPORT**

LG587314402

Report verification at [igi.org](http://igi.org)

**LABORATORY GROWN  
DIAMOND REPORT**

**LABORATORY GROWN DIAMOND REPORT**

**LABORATORY GROWN DIAMOND REPORT**

June 26, 2023  
 IGI Report Number **LG587314402**  
 Description **LABORATORY GROWN  
DIAMOND**  
 Shape and Cutting Style **ROUND BRILLIANT**  
 Measurements **7.92 - 7.98 X 4.88 MM**

**GRADING RESULTS**

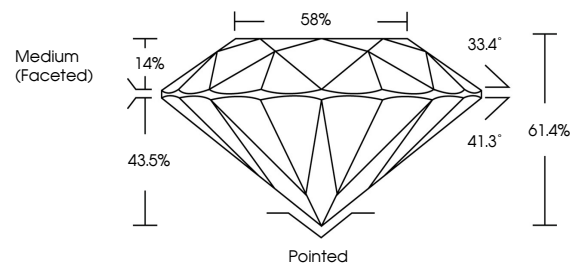
Carat Weight **1.89 CARAT**  
 Color Grade **D**  
 Clarity Grade **INTERNALLY FLAWLESS**  
 Cut Grade **IDEAL**

**ADDITIONAL GRADING INFORMATION**

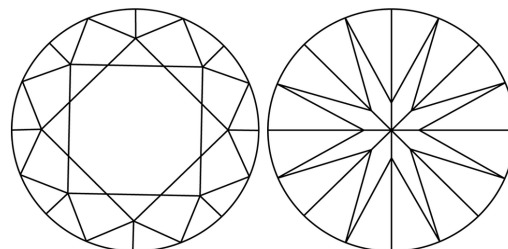
Polish **EXCELLENT**  
 Symmetry **EXCELLENT**  
 Fluorescence **NONE**  
 Inscription(s) **IGI LG587314402**

Comments: As Grown - No indication of post-growth treatment.  
 This Laboratory Grown Diamond was created by High Pressure High Temperature (HPHT) growth process.  
 Type II

**PROPORTIONS**



**CLARITY CHARACTERISTICS**



**KEY TO SYMBOLS**

Red symbols indicate internal characteristics.  
 Green symbols indicate external characteristics.

**GRADING SCALES**

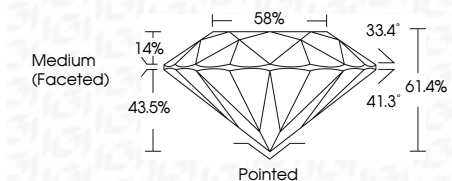
**CLARITY**

| IF                  | VVS <sup>1-2</sup>          | VS <sup>1-2</sup>      | SI <sup>1-2</sup> | I <sup>1-3</sup> |
|---------------------|-----------------------------|------------------------|-------------------|------------------|
| Internally Flawless | Very Very Slightly Included | Very Slightly Included | Slightly Included | Included         |

**COLOR**

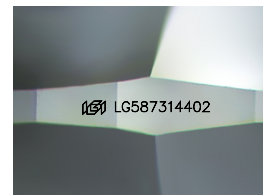
| D | E | F | G | H | I | J | Faint | Very Light | Light |
|---|---|---|---|---|---|---|-------|------------|-------|
|---|---|---|---|---|---|---|-------|------------|-------|

June 26, 2023  
 IGI Report Number **LG587314402**  
 Description **LABORATORY GROWN  
DIAMOND**  
 Shape and Cutting Style **ROUND BRILLIANT**  
 Measurements **7.92 - 7.98 X 4.88 MM**  
**GRADING RESULTS**  
 Carat Weight **1.89 CARAT**  
 Color Grade **D**  
 Clarity Grade **INTERNALLY FLAWLESS**  
 Cut Grade **IDEAL**



**ADDITIONAL GRADING INFORMATION**

Polish **EXCELLENT**  
 Symmetry **EXCELLENT**  
 Fluorescence **NONE**  
 Inscription(s) **IGI LG587314402**  
 Comments: As Grown - No indication of post-growth treatment.  
 This Laboratory Grown Diamond was created by High Pressure High Temperature (HPHT) growth process.  
 Type II



Sample Image Used



|               |                           |                 |            |       |        |       |        |          |                  |                 |   |           |      |                 |
|---------------|---------------------------|-----------------|------------|-------|--------|-------|--------|----------|------------------|-----------------|---|-----------|------|-----------------|
| June 26, 2023 | IGI Report No LG587314402 | ROUND BRILLIANT | 1.89 CARAT | D     | IF     | IDEAL | 61.4%  | 58%      | Medium (Faceted) | Pointed         | EXCELLENT   | EXCELLENT | NONE | IGI LG587314402 |
| Carat Weight  | Color Grade               | Clarity Grade   | Depth      | Table | Girdle | Culet | Polish | Symmetry | Fluorescence     | Inscriptions(s) | Comments: As Grown - No indication of post-growth treatment. This Laboratory Grown Diamond was created by High Pressure High Temperature (HPHT) growth process. Type II |           |      |                 |