



ELECTRONIC COPY

LABORATORY GROWN DIAMOND REPORT

July 13, 2023
 IGI Report Number **LG589313334**
 Description **LABORATORY GROWN
DIAMOND**
 Shape and Cutting Style **CUT CORNERED RECTANGULAR
MODIFIED BRILLIANT**
 Measurements **8.36 X 5.82 X 3.88 MM**

GRADING RESULTS

Carat Weight **1.71 CARAT**
 Color Grade **H**
 Clarity Grade **VS 2**

ADDITIONAL GRADING INFORMATION

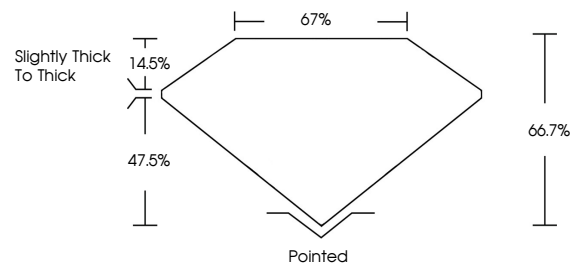
Polish **EXCELLENT**
 Symmetry **EXCELLENT**
 Fluorescence **NONE**
 Inscription(s) **IGI LG589313334**

Comments: This Laboratory Grown Diamond was created by Chemical Vapor Deposition (CVD) growth process and may include post-growth treatment. Type IIa

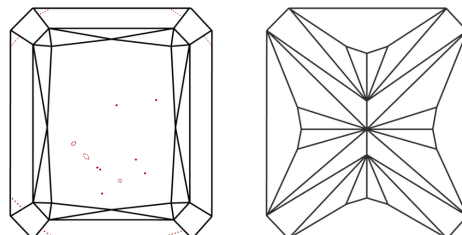
LABORATORY GROWN DIAMOND REPORT

LG589313334
 Report verification at igi.org

PROPORTIONS



CLARITY CHARACTERISTICS



KEY TO SYMBOLS

Red symbols indicate internal characteristics.
 Green symbols indicate external characteristics.

**LABORATORY GROWN
DIAMOND REPORT**

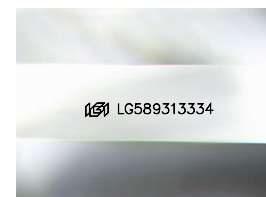
GRADING SCALES

CLARITY

IF	VVS ¹⁻²	VS ¹⁻²	SI ¹⁻²	I ¹⁻³
Internally Flawless	Very Very Slightly Included	Very Slightly Included	Slightly Included	Included

COLOR

D	E	F	G	H	I	J	Faint	Very Light	Light
---	---	---	---	---	---	---	-------	------------	-------



Sample Image Used

LABORATORY GROWN DIAMOND REPORT

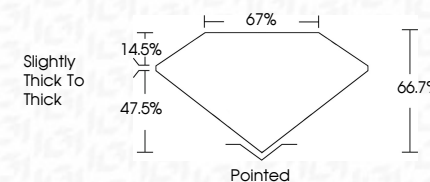
July 13, 2023
 IGI Report Number **LG589313334**
 Description **LABORATORY GROWN
DIAMOND**
 Shape and Cutting Style **CUT CORNERED
RECTANGULAR MODIFIED
BRILLIANT**
 Measurements **8.36 X 5.82 X 3.88 MM**

GRADING RESULTS

Carat Weight **1.71 CARAT**
 Color Grade **H**
 Clarity Grade **VS 2**

ADDITIONAL GRADING INFORMATION

Polish **EXCELLENT**
 Symmetry **EXCELLENT**
 Fluorescence **NONE**
 Inscription(s) **IGI LG589313334**
 Comments: This Laboratory Grown Diamond was created by Chemical Vapor Deposition (CVD) growth process and may include post-growth treatment. Type IIa



IGI

July 13, 2023
 IGI Report No **LG589313334**
CUT CORNERED RECT. MODIFIED BRILLIANT
8.36 X 5.82 X 3.88 MM
 Carat Weight **1.71 CARAT**
 Color Grade **H**
 Clarity Grade **VS 2**
 Depth **66.7%**
 Table **67%**
 Girdle **Slightly thick to thick**
 Culet **Pointed**
 Polish **EXCELLENT**
 Symmetry **EXCELLENT**
 Fluorescence **NONE**
 Inscription(s) **IGI LG589313334**

Comments: This Laboratory Grown Diamond was created by Chemical Vapor Deposition (CVD) growth process and may include post-growth treatment. Type IIa