



ELECTRONIC COPY

LABORATORY GROWN DIAMOND REPORT

LG589379196

Report verification at igi.org

LABORATORY GROWN DIAMOND REPORT

LABORATORY GROWN DIAMOND REPORT

LABORATORY GROWN DIAMOND REPORT

July 5, 2023
IGI Report Number LG589379196
Description LABORATORY GROWN DIAMOND
Shape and Cutting Style ROUND BRILLIANT
Measurements 6.60 - 6.64 X 4.06 MM

GRADING RESULTS

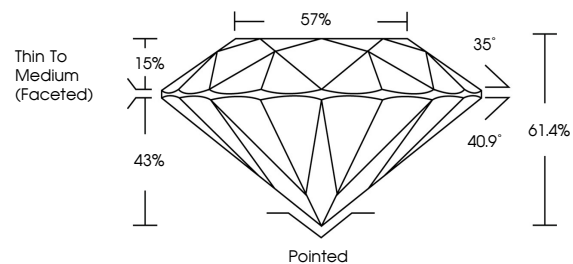
Carat Weight 1.09 CARAT
Color Grade E
Clarity Grade SI 1
Cut Grade IDEAL

ADDITIONAL GRADING INFORMATION

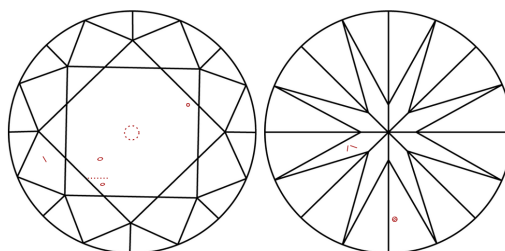
Polish EXCELLENT
Symmetry EXCELLENT
Fluorescence NONE
Inscription(s) IGI LG589379196

Comments: This Laboratory Grown Diamond was created by Chemical Vapor Deposition (CVD) growth process and may include post-growth treatment. Type IIa

PROPORTIONS



CLARITY CHARACTERISTICS



KEY TO SYMBOLS

Red symbols indicate internal characteristics.
Green symbols indicate external characteristics.

GRADING SCALES

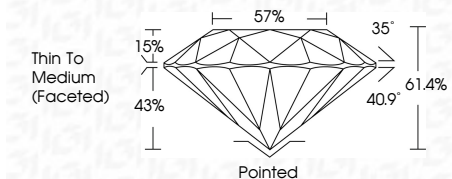
CLARITY

Table mapping clarity grades (IF, VVS, VS, SI, I) to descriptions (Internally Flawless, Very Very Slightly Included, etc.)

COLOR

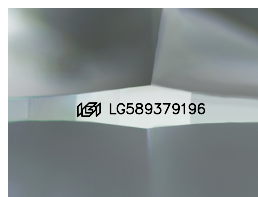
Table mapping color grades (D, E, F, G, H, I, J) to descriptions (Faint, Very Light, Light)

July 5, 2023
IGI Report Number LG589379196
Description LABORATORY GROWN DIAMOND
Shape and Cutting Style ROUND BRILLIANT
Measurements 6.60 - 6.64 X 4.06 MM
GRADING RESULTS
Carat Weight 1.09 CARAT
Color Grade E
Clarity Grade SI 1
Cut Grade IDEAL



ADDITIONAL GRADING INFORMATION

Polish EXCELLENT
Symmetry EXCELLENT
Fluorescence NONE
Inscription(s) IGI LG589379196
Comments: This Laboratory Grown Diamond was created by Chemical Vapor Deposition (CVD) growth process and may include post-growth treatment. Type IIa



Sample Image Used



IGI

July 5, 2023
IGI Report No LG589379196
ROUND BRILLIANT
6.60 - 6.64 X 4.06 MM
1.09 CARAT E
SI 1 IDEAL
61.4% 57%
Thin To Medium (Faceted)
Pointed EXCELLENT EXCELLENT NONE
IGI LG589379196
Comments: This Laboratory Grown Diamond was created by Chemical Vapor Deposition (CVD) growth process and may include post-growth treatment. Type IIa