



**INTERNATIONAL  
GEMOLOGICAL  
INSTITUTE**

**ELECTRONIC COPY**

**LABORATORY GROWN  
DIAMOND REPORT**

**LG589379634**

**IGI LABORATORY GROWN  
DIAMOND ID REPORT**

July 6, 2023  
IGI Report Number **LG589379634**  
**CUSHION BRILLIANT**  
**6.59 X 5.24 X 3.39 MM**  
Carat Weight 0.90 CARAT  
Color Grade E  
Clarity Grade VVS 2  
Polish EXCELLENT  
Symmetry EXCELLENT  
Fluorescence NONE  
Inscription(s) LG589379634

Comments: As Grown - No indication of post-growth treatment. This Laboratory Grown Diamond was created by High Pressure High Temperature (HPHT) growth process. Type II

**LABORATORY GROWN DIAMOND REPORT**

**IGI LABORATORY GROWN DIAMOND IDENTIFICATION REPORT**

July 6, 2023  
IGI Report Number LG589379634  
Description LABORATORY GROWN DIAMOND  
Shape and Cutting Style CUSHION BRILLIANT  
Measurements 6.59 X 5.24 X 3.39 MM

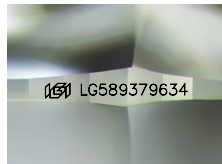
**GRADING RESULTS**

Carat Weight 0.90 CARAT  
Color Grade E  
Clarity Grade VVS 2

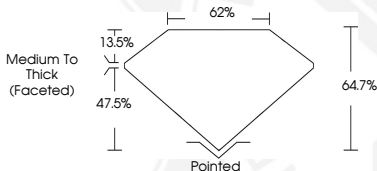
**ADDITIONAL GRADING INFORMATION**

Polish EXCELLENT  
Symmetry EXCELLENT  
Fluorescence NONE  
Inscription(s) LG589379634

Comments: As Grown - No indication of post-growth treatment. This Laboratory Grown Diamond was created by High Pressure High Temperature (HPHT) growth process. Type II



Sample Image Used



**IGI LABORATORY GROWN  
DIAMOND ID REPORT**

July 6, 2023  
IGI Report Number **LG589379634**  
**CUSHION BRILLIANT**  
**6.59 X 5.24 X 3.39 MM**  
Carat Weight 0.90 CARAT  
Color Grade E  
Clarity Grade VVS 2  
Polish EXCELLENT  
Symmetry EXCELLENT  
Fluorescence NONE  
Inscription(s) LG589379634

Comments: As Grown - No indication of post-growth treatment. This Laboratory Grown Diamond was created by High Pressure High Temperature (HPHT) growth process. Type II



THIS DOCUMENT WAS PRODUCED WITH THE FOLLOWING SECURITY MEASURES: SPECIAL DOCUMENT PAPER, INK SCREENS, WATERMARK, BACKGROUND DESIGN, HOLOGRAM AND OTHER SECURITY FEATURES NOT LISTED AND DO EXCEED DOCUMENT SECURITY INDUSTRY GUIDELINES.

For terms & conditions and to verify this report, please visit [www.igi.org](http://www.igi.org)