



**INTERNATIONAL
GEMOLOGICAL
INSTITUTE**

ELECTRONIC COPY

LABORATORY GROWN DIAMOND REPORT

July 4, 2023	
IGI Report Number	LG589380567
Description	LABORATORY GROWN DIAMOND
Shape and Cutting Style	CUT CORNERED SQUARE MODIFIED BRILLIANT
Measurements	8.63 X 8.47 X 5.58 MM

GRADING RESULTS

Carat Weight	4.00 CARATS
Color Grade	E
Clarity Grade	VS 1

ADDITIONAL GRADING INFORMATION

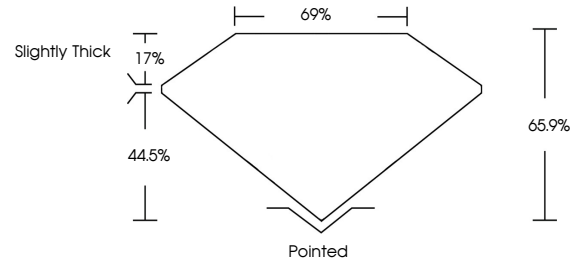
Polish	EXCELLENT
Symmetry	EXCELLENT
Fluorescence	NONE
Inscription(s)	 LG589380567

Comments: This Laboratory Grown Diamond was created by Chemical Vapor Deposition (CVD) growth process and may include post-growth treatment.
Type IIa

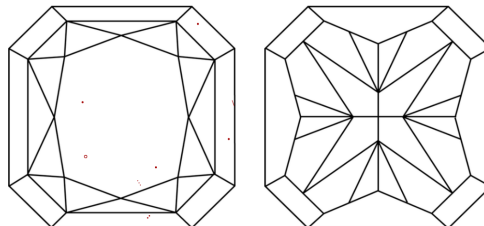
LABORATORY GROWN DIAMOND REPORT

LG589380567
Report verification at igi.org

PROPORTIONS



CLARITY CHARACTERISTICS



KEY TO SYMBOLS

Red symbols indicate internal characteristics.
Green symbols indicate external characteristics.

LABORATORY GROWN
DIAMOND REPORT

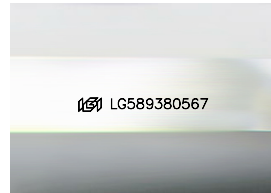
GRADING SCALES

CLARITY

IF	VVS ¹⁻²	VS ¹⁻²	SI ¹⁻²	I ¹⁻³
Internally Flawless	Very Very Slightly Included	Very Slightly Included	Slightly Included	Included

COLOR

D E F G H I J Faint Very Light Light



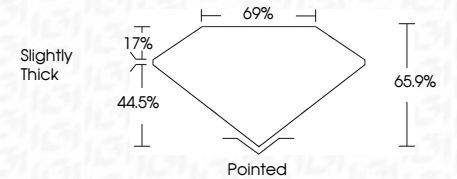
Sample Image Used



July 4, 2023	
IGI Report Number	LG589380567
Description	LABORATORY GROWN DIAMOND
Shape and Cutting Style	CUT CORNERED SQUARE MODIFIED BRILLIANT
Measurements	8.63 X 8.47 X 5.58 MM

GRADING RESULTS

Carat Weight	4.00 CARATS
Color Grade	E
Clarity Grade	VS 1



ADDITIONAL GRADING INFORMATION

Polish	EXCELLENT
Symmetry	EXCELLENT
Fluorescence	NONE
Inscription(s)	 LG589380567
<p>Comments: This Laboratory Grown Diamond was created by Chemical Vapor Deposition (CVD) growth process and may include post-growth treatment.</p> <p>Type IIa</p>	



IGI



© IGI 2020, International Gemological Institute

FD - 10 20

www.igi.org

THIS DOCUMENT WAS PRODUCED WITH THE FOLLOWING SECURITY MEASURES: SPECIAL DOCUMENT PAPER, INK SCREENS, WATERMARK, BACKGROUND DESIGNS, HOLOGRAM AND OTHER SECURITY FEATURES NOT LISTED AND DO EXCEED DOCUMENT SECURITY INDUSTRY GUIDELINES.

JULY 4, 2023 IGI Report No LG89930057 CUT CORNERED SQUARE MODIFIED BRILLIANT	8.93 X 8.47 X 5.58 MM 4.00 CARATS VS 1 65.5% 69% Slightly Thick	Color Grade Clarity Grade Depth Table Girdle	Color VS 1 65.5% 69% Slightly Thick	Cullet Polish Symmetry Fluorescence Inscription(s)	EXCELLENT EXCELLENT EXCELLENT NONE NONE 691 LG89930057
---	--	--	---	--	---

Comments:
 The Laboratory Grown Diamond was created by Chemical Vapor Deposition (CVD) growth process and may include post-growth treatment.
 Type Ia