



**ELECTRONIC COPY**

**LABORATORY GROWN DIAMOND REPORT**

LG589397231

Report verification at igi.org

**LABORATORY GROWN  
DIAMOND REPORT**

**LABORATORY GROWN DIAMOND REPORT**

**LABORATORY GROWN DIAMOND REPORT**

July 18, 2023  
 IGI Report Number **LG589397231**  
 Description **LABORATORY GROWN  
DIAMOND**  
 Shape and Cutting Style **EMERALD CUT**  
 Measurements **7.56 X 5.21 X 3.55 MM**

**GRADING RESULTS**

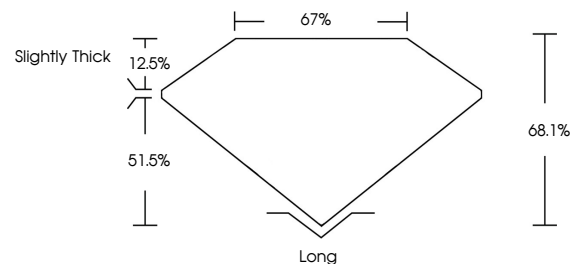
Carat Weight **1.42 CARAT**  
 Color Grade **F**  
 Clarity Grade **VS 1**

**ADDITIONAL GRADING INFORMATION**

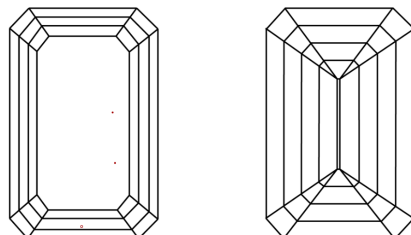
Polish **EXCELLENT**  
 Symmetry **EXCELLENT**  
 Fluorescence **NONE**  
 Inscription(s) **IGI LG589397231**

Comments: This Laboratory Grown Diamond was created by Chemical Vapor Deposition (CVD) growth process and may include post-growth treatment. Type IIa

**PROPORTIONS**



**CLARITY CHARACTERISTICS**



**KEY TO SYMBOLS**

Red symbols indicate internal characteristics.  
 Green symbols indicate external characteristics.

**GRADING SCALES**

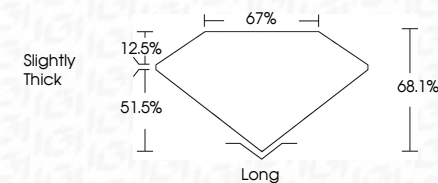
**CLARITY**

| IF                  | VVS <sup>1-2</sup>          | VS <sup>1-2</sup>      | SI <sup>1-2</sup> | I <sup>1-3</sup> |
|---------------------|-----------------------------|------------------------|-------------------|------------------|
| Internally Flawless | Very Very Slightly Included | Very Slightly Included | Slightly Included | Included         |

**COLOR**

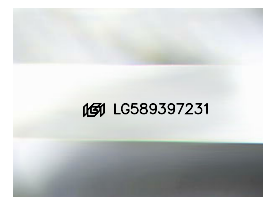
| D | E | F | G | H | I | J | Faint | Very Light | Light |
|---|---|---|---|---|---|---|-------|------------|-------|
|---|---|---|---|---|---|---|-------|------------|-------|

July 18, 2023  
 IGI Report Number **LG589397231**  
 Description **LABORATORY GROWN  
DIAMOND**  
 Shape and Cutting Style **EMERALD CUT**  
 Measurements **7.56 X 5.21 X 3.55 MM**  
**GRADING RESULTS**  
 Carat Weight **1.42 CARAT**  
 Color Grade **F**  
 Clarity Grade **VS 1**



**ADDITIONAL GRADING INFORMATION**

Polish **EXCELLENT**  
 Symmetry **EXCELLENT**  
 Fluorescence **NONE**  
 Inscription(s) **IGI LG589397231**  
 Comments: This Laboratory Grown Diamond was created by Chemical Vapor Deposition (CVD) growth process and may include post-growth treatment. Type IIa



Sample Image Used



**IGI**

July 18, 2023  
 IGI Report No LG589397231  
**EMERALD CUT**  
 7.56 X 5.21 X 3.55 MM  
 Carat Weight **1.42 CARAT**  
 Color Grade **F**  
 Clarity Grade **VS 1**  
 Depth **68.1%**  
 Table **67%**  
 Girdle **Slightly Thick**  
 Culet **Long**  
 Polish **EXCELLENT**  
 Symmetry **EXCELLENT**  
 Fluorescence **NONE**  
 Inscription(s) **IGI LG589397231**

Comments: This Laboratory Grown Diamond was created by Chemical Vapor Deposition (CVD) growth process and may include post-growth treatment. Type IIa