



ELECTRONIC COPY

LABORATORY GROWN DIAMOND REPORT

LG591305132

Report verification at igi.org

**LABORATORY GROWN
DIAMOND REPORT**

LABORATORY GROWN DIAMOND REPORT

LABORATORY GROWN DIAMOND REPORT

August 4, 2023
 IGI Report Number **LG591305132**
 Description **LABORATORY GROWN
DIAMOND**
 Shape and Cutting Style **ROUND BRILLIANT**
 Measurements **11.05 - 11.11 X 6.85 MM**

GRADING RESULTS

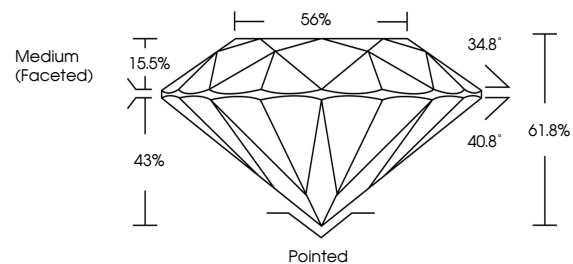
Carat Weight **5.17 CARATS**
 Color Grade **H**
 Clarity Grade **VVS 1**
 Cut Grade **IDEAL**

ADDITIONAL GRADING INFORMATION

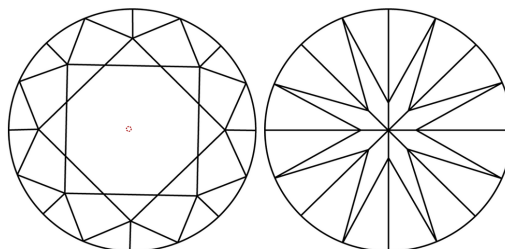
Polish **EXCELLENT**
 Symmetry **EXCELLENT**
 Fluorescence **NONE**
 Inscription(s) **IGI LG591305132**

Comments: HEARTS & ARROWS
 As Grown - No indication of post-growth treatment.
 This Laboratory Grown Diamond was created by High
 Pressure High Temperature (HPHT) growth process.
 Type II
 Faint Blue

PROPORTIONS



CLARITY CHARACTERISTICS



KEY TO SYMBOLS

Red symbols indicate internal characteristics.
 Green symbols indicate external characteristics.



GRADING SCALES

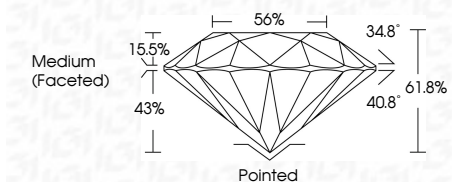
CLARITY

IF	VVS ¹⁻²	VS ¹⁻²	SI ¹⁻²	I ¹⁻³
Internally Flawless	Very Very Slightly Included	Very Slightly Included	Slightly Included	Included

COLOR

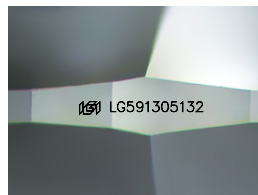
D	E	F	G	H	I	J	Faint	Very Light	Light
---	---	---	---	---	---	---	-------	------------	-------

August 4, 2023
 IGI Report Number **LG591305132**
 Description **LABORATORY GROWN
DIAMOND**
 Shape and Cutting Style **ROUND BRILLIANT**
 Measurements **11.05 - 11.11 X 6.85 MM**
GRADING RESULTS
 Carat Weight **5.17 CARATS**
 Color Grade **H**
 Clarity Grade **VVS 1**
 Cut Grade **IDEAL**



ADDITIONAL GRADING INFORMATION

Polish **EXCELLENT**
 Symmetry **EXCELLENT**
 Fluorescence **NONE**
 Inscription(s) **IGI LG591305132**
 Comments: HEARTS & ARROWS
 As Grown - No indication of post-growth treatment.
 This Laboratory Grown Diamond was created by High
 Pressure High Temperature (HPHT) growth process.
 Type II
 Faint Blue



Sample Image Used



IGI

August 4, 2023	IGI Report No LG591305132	ROUND BRILLIANT	11.05 - 11.11 X 6.85 MM	5.17 CARATS	H	VVS 1	IDEAL	61.8%	56%	Medium (Faceted)	Pointed	EXCELLENT	EXCELLENT	NONE	IGI LG591305132
IGI Report No	IGI Report No	Shape and Cutting Style	Measurements	Carat Weight	Color Grade	Clarity Grade	Cut Grade	Depth	Table	Girdle	Culet	Polish	Symmetry	Fluorescence	Inscriptions(s)