



**ELECTRONIC COPY**

**LABORATORY GROWN DIAMOND REPORT**

July 24, 2023  
 IGI Report Number **LG591314147**  
 Description **LABORATORY GROWN  
DIAMOND**  
 Shape and Cutting Style **ROUND BRILLIANT**  
 Measurements **7.56 - 7.61 X 4.71 MM**

**GRADING RESULTS**

Carat Weight **1.65 CARAT**  
 Color Grade **E**  
 Clarity Grade **VS 2**  
 Cut Grade **IDEAL**

**ADDITIONAL GRADING INFORMATION**

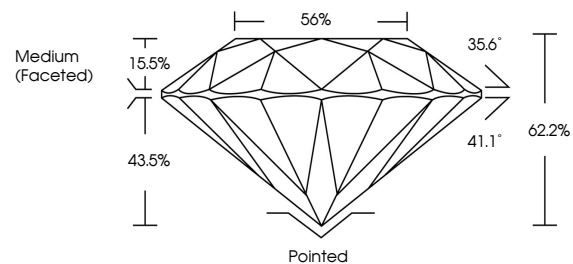
Polish **EXCELLENT**  
 Symmetry **EXCELLENT**  
 Fluorescence **NONE**  
 Inscription(s) **IGI LG591314147**

Comments: As Grown - No indication of post-growth treatment.  
 This Laboratory Grown Diamond was created by High Pressure High Temperature (HPHT) growth process.  
 Type II

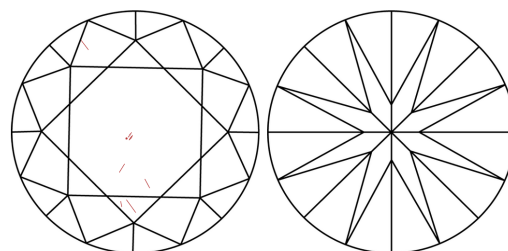
**LABORATORY GROWN DIAMOND REPORT**

**LG591314147**  
 Report verification at [igi.org](http://igi.org)

**PROPORTIONS**



**CLARITY CHARACTERISTICS**



**KEY TO SYMBOLS**

Red symbols indicate internal characteristics.  
 Green symbols indicate external characteristics.

**LABORATORY GROWN  
DIAMOND REPORT**

**GRADING SCALES**

**CLARITY**

IF	VVS <sup>1-2</sup>	VS <sup>1-2</sup>	SI <sup>1-2</sup>	I <sup>1-3</sup>
Internally Flawless	Very Very Slightly Included	Very Slightly Included	Slightly Included	Included

**COLOR**

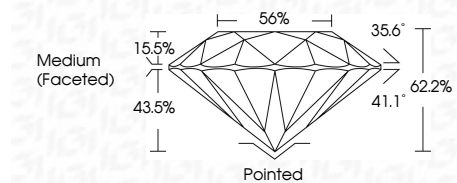
D	E	F	G	H	I	J	Faint	Very Light	Light
---	---	---	---	---	---	---	-------	------------	-------

**LABORATORY GROWN DIAMOND REPORT**

July 24, 2023  
 IGI Report Number **LG591314147**  
 Description **LABORATORY GROWN  
DIAMOND**  
 Shape and Cutting Style **ROUND BRILLIANT**  
 Measurements **7.56 - 7.61 X 4.71 MM**

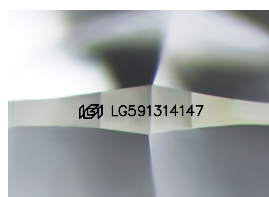
**GRADING RESULTS**

Carat Weight **1.65 CARAT**  
 Color Grade **E**  
 Clarity Grade **VS 2**  
 Cut Grade **IDEAL**



**ADDITIONAL GRADING INFORMATION**

Polish **EXCELLENT**  
 Symmetry **EXCELLENT**  
 Fluorescence **NONE**  
 Inscription(s) **IGI LG591314147**  
 Comments: As Grown - No indication of post-growth treatment.  
 This Laboratory Grown Diamond was created by High Pressure High Temperature (HPHT) growth process.  
 Type II



Sample Image Used



July 24, 2023  
 IGI Report No LG591314147  
 ROUND BRILLIANT

7.56 - 7.61 X 4.71 MM  
 1.65 CARAT  
 Color Grade **E**  
 Clarity Grade **VS 2**  
 Cut Grade **IDEAL**  
 Depth **62.2%**  
 Table **15.5%**  
 Girdle **Medium (Faceted)**  
 Culet **Pointed**  
 Polish **EXCELLENT**  
 Symmetry **EXCELLENT**  
 Fluorescence **NONE**  
 Inscription(s) **IGI LG591314147**

Comments: As Grown - No indication of post-growth treatment.  
 This Laboratory Grown Diamond was created by High Pressure High Temperature (HPHT) growth process.  
 Type II



**IGI**