



**INTERNATIONAL  
GEMOLOGICAL  
INSTITUTE**

**ELECTRONIC COPY**

**LABORATORY GROWN  
DIAMOND REPORT**

**LG591336213**

**IGI LABORATORY GROWN  
DIAMOND ID REPORT**

July 14, 2023

IGI Report Number **LG591336213**

**CUSHION BRILLIANT**

**7.03 X 4.97 X 3.31 MM**

Carat Weight	0.90 CARAT
Color Grade	F
Clarity Grade	SI 1
Polish	EXCELLENT
Symmetry	EXCELLENT
Fluorescence	NONE
Inscription(s)	LG591336213

Comments: This Laboratory Grown Diamond was created by Chemical Vapor Deposition (CVD) growth process and may include post-growth treatment. Type Ila

**LABORATORY GROWN DIAMOND REPORT**

**IGI LABORATORY GROWN DIAMOND IDENTIFICATION REPORT**

July 14, 2023

IGI Report Number **LG591336213**

Description **LABORATORY GROWN DIAMOND**

Shape and Cutting Style **CUSHION BRILLIANT**

Measurements **7.03 X 4.97 X 3.31 MM**

**GRADING RESULTS**

Carat Weight **0.90 CARAT**

Color Grade **F**

Clarity Grade **SI 1**

**ADDITIONAL GRADING INFORMATION**

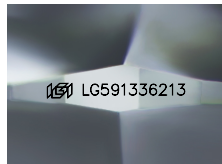
Polish **EXCELLENT**

Symmetry **EXCELLENT**

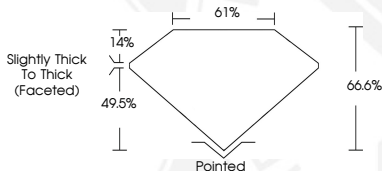
Fluorescence **NONE**

Inscription(s) **LG591336213**

Comments: This Laboratory Grown Diamond was created by Chemical Vapor Deposition (CVD) growth process and may include post-growth treatment. Type Ila



Sample Image Used



**IGI LABORATORY GROWN  
DIAMOND ID REPORT**

July 14, 2023

IGI Report Number **LG591336213**

**CUSHION BRILLIANT**

**7.03 X 4.97 X 3.31 MM**

Carat Weight	0.90 CARAT
Color Grade	F
Clarity Grade	SI 1
Polish	EXCELLENT
Symmetry	EXCELLENT
Fluorescence	NONE
Inscription(s)	LG591336213

Comments: This Laboratory Grown Diamond was created by Chemical Vapor Deposition (CVD) growth process and may include post-growth treatment. Type Ila

THIS DOCUMENT WAS PRODUCED WITH THE FOLLOWING SECURITY MEASURES: SPECIAL DOCUMENT PAPER, INK SCREENS, WATERMARK, BACKGROUND DESIGN, HOLOGRAM AND OTHER SECURITY FEATURES NOT LISTED AND DO EXCEED DOCUMENT SECURITY INDUSTRY GUIDELINES.

For terms & conditions and to verify this report, please visit [www.igi.org](http://www.igi.org)