



ELECTRONIC COPY

LABORATORY GROWN DIAMOND REPORT

July 19, 2023	
IGI Report Number	LG591348145
Description	LABORATORY GROWN DIAMOND
Shape and Cutting Style	ROUND BRILLIANT
Measurements	9.27 - 9.31 X 5.62 MM

GRADING RESULTS

Carat Weight	3.00 CARATS
Color Grade	J
Clarity Grade	VS 2
Cut Grade	EXCELLENT

ADDITIONAL GRADING INFORMATION

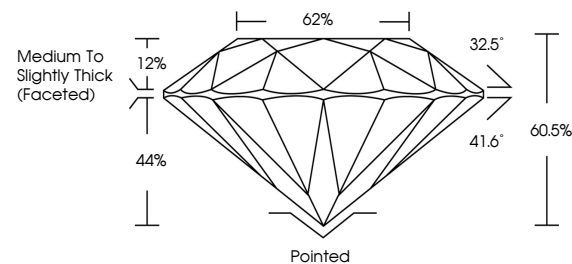
Polish	EXCELLENT
Symmetry	EXCELLENT
Fluorescence	NONE
Inscription(s)	15 LG591348145

Comments: This Laboratory Grown Diamond was created by Chemical Vapor Deposition (CVD) growth process and may include post-growth treatment.
Type IIa

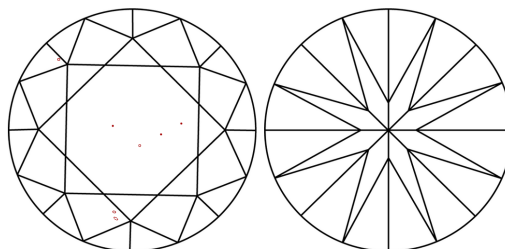
LABORATORY GROWN DIAMOND REPORT

LG591348145
Report verification at lgi.org

PROPORTIONS



CLARITY CHARACTERISTICS



KEY TO SYMBOLS

Red symbols indicate internal characteristics.
Green symbols indicate external characteristics.

LABORATORY GROWN
DIAMOND REPORT

GRADING SCALES

CLARITY

IF	VVS ¹⁻²	VS ¹⁻²	SI ¹⁻²	I ¹⁻³
Internally Flawless	Very Very Slightly Included	Very Slightly Included	Slightly Included	Included

COLOR

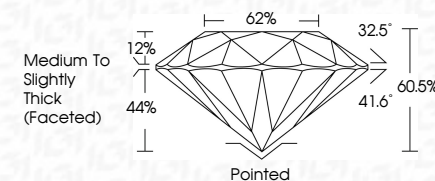
D E F G H I J Faint Very Light Light




Sample Image Used



July 19, 2023	
IGI Report Number	LG591348145
Description	LABORATORY GROWN DIAMOND
Shape and Cutting Style	ROUND BRILLIANT
Measurements	9.27 - 9.31 X 5.62 MM
GRADING RESULTS	
Carat Weight	3.00 CARATS
Color Grade	J
Clarity Grade	VS 2
Cut Grade	EXCELLENT



ADDITIONAL GRADING INFORMATION

Polish	EXCELLENT
Symmetry	EXCELLENT
Fluorescence	NONE
Inscription(s)	 LG591348145
<p>Comments: This Laboratory Grown Diamond was created by Chemical Vapor Deposition (CVD) growth process and may include post-growth treatment.</p> <p>Type IIa</p>	



© IGI 2020, International Gemological Institute

FD - 10 20



THIS DOCUMENT WAS PRODUCED WITH THE FOLLOWING SECURITY MEASURES: SPECIAL DOCUMENT PAPER, INK SCREENS, WATERMARK, BACKGROUND DESIGNS, HOLOGRAM AND OTHER SECURITY FEATURES NOT LISTED AND DO EXCEED DOCUMENT SECURITY INDUSTRY GUIDELINE

www.igi.org

July 19, 2023	GI Report No. LG97340145	ROUND BRILLIANT	27.27 - 9.31 X 5.62 MM	Carat Weight Color Grade Clarity Grade Cut Grade Depth Girdle Table Culet Polish Symmetry Fluorescence Inscriptions(s)	3.00 CARATS J VS 2 EXCELLENT 60.5% 62% Medium To Slightly Thick (Faceted) Polished EXCELLENT EXCELLENT NONE lg915671940145
---------------	--------------------------	-----------------	------------------------	---	---

Comments:

The Laboratory Grown Diamond was created by Chemical Vapor Deposition (CVD) process and may include growth process with treatment.

Type Ila