



**INTERNATIONAL
GEMOLOGICAL
INSTITUTE**

ELECTRONIC COPY

**LABORATORY GROWN
DIAMOND REPORT**

LG591349107

**IGI LABORATORY GROWN
DIAMOND ID REPORT**

July 14, 2023
IGI Report Number **LG591349107**
CUSHION BRILLIANT
6.33 X 4.56 X 3.05 MM
Carat Weight 0.70 CARAT
Color Grade G
Clarity Grade VS 1
Polish EXCELLENT
Symmetry EXCELLENT
Fluorescence NONE
Inscription(s) LG591349107

Comments: This Laboratory Grown Diamond was created by Chemical Vapor Deposition (CVD) growth process and may include post-growth treatment. Type Ila

LABORATORY GROWN DIAMOND REPORT

IGI LABORATORY GROWN DIAMOND IDENTIFICATION REPORT

July 14, 2023
IGI Report Number LG591349107
Description LABORATORY GROWN DIAMOND
Shape and Cutting Style CUSHION BRILLIANT
Measurements 6.33 X 4.56 X 3.05 MM

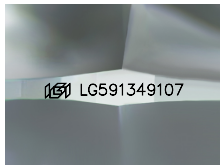
GRADING RESULTS

Carat Weight 0.70 CARAT
Color Grade G
Clarity Grade VS 1

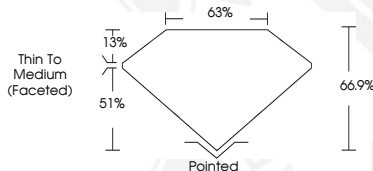
ADDITIONAL GRADING INFORMATION

Polish EXCELLENT
Symmetry EXCELLENT
Fluorescence NONE
Inscription(s) LG591349107

Comments: This Laboratory Grown Diamond was created by Chemical Vapor Deposition (CVD) growth process and may include post-growth treatment. Type Ila



Sample Image Used



**IGI LABORATORY GROWN
DIAMOND ID REPORT**

July 14, 2023
IGI Report Number **LG591349107**
CUSHION BRILLIANT
6.33 X 4.56 X 3.05 MM
Carat Weight 0.70 CARAT
Color Grade G
Clarity Grade VS 1
Polish EXCELLENT
Symmetry EXCELLENT
Fluorescence NONE
Inscription(s) LG591349107

Comments: This Laboratory Grown Diamond was created by Chemical Vapor Deposition (CVD) growth process and may include post-growth treatment. Type Ila

THIS DOCUMENT WAS PRODUCED WITH THE FOLLOWING SECURITY MEASURES: SPECIAL DOCUMENT PAPER, INK SCREENS, WATERMARK, BACKGROUND DESIGN, HOLOGRAM AND OTHER SECURITY FEATURES NOT LISTED AND DO EXCEED DOCUMENT SECURITY INDUSTRY GUIDELINES.

For terms & conditions and to verify this report, please visit www.igi.org