



ELECTRONIC COPY

LABORATORY GROWN DIAMOND REPORT

August 18, 2023
 IGI Report Number **LG591352081**
 Description **LABORATORY GROWN
DIAMOND**
 Shape and Cutting Style **CUSHION MODIFIED BRILLIANT**
 Measurements **7.18 X 5.32 X 3.58 MM**

GRADING RESULTS

Carat Weight **1.06 CARAT**
 Color Grade **G**
 Clarity Grade **VVS 2**

ADDITIONAL GRADING INFORMATION

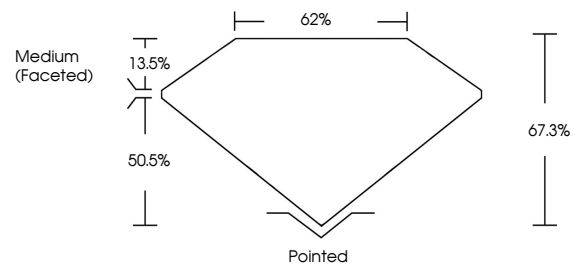
Polish **EXCELLENT**
 Symmetry **EXCELLENT**
 Fluorescence **NONE**
 Inscription(s) **IGI LG591352081**

Comments: As Grown - No indication of post-growth treatment.
 This Laboratory Grown Diamond was created by High Pressure High Temperature (HPHT) growth process.
 Type II
 Faint Blue

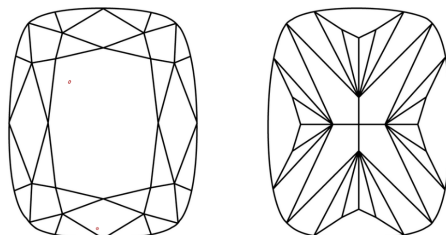
LABORATORY GROWN DIAMOND REPORT

LG591352081
 Report verification at igi.org

PROPORTIONS



CLARITY CHARACTERISTICS



KEY TO SYMBOLS

Red symbols indicate internal characteristics.
 Green symbols indicate external characteristics.

**LABORATORY GROWN
DIAMOND REPORT**

GRADING SCALES

CLARITY

IF	VVS ¹⁻²	VS ¹⁻²	SI ¹⁻²	I ¹⁻³
Internally Flawless	Very Very Slightly Included	Very Slightly Included	Slightly Included	Included

COLOR

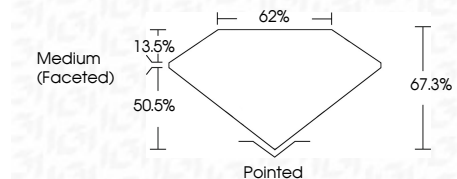
D	E	F	G	H	I	J	Faint	Very Light	Light
---	---	---	---	---	---	---	-------	------------	-------

LABORATORY GROWN DIAMOND REPORT

August 18, 2023
 IGI Report Number **LG591352081**
 Description **LABORATORY GROWN
DIAMOND**
 Shape and Cutting Style **CUSHION MODIFIED
BRILLIANT**
 Measurements **7.18 X 5.32 X 3.58 MM**

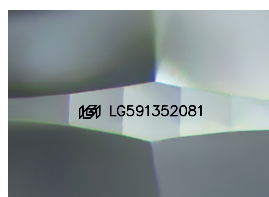
GRADING RESULTS

Carat Weight **1.06 CARAT**
 Color Grade **G**
 Clarity Grade **VVS 2**



ADDITIONAL GRADING INFORMATION

Polish **EXCELLENT**
 Symmetry **EXCELLENT**
 Fluorescence **NONE**
 Inscription(s) **IGI LG591352081**
 Comments: As Grown - No indication of post-growth treatment.
 This Laboratory Grown Diamond was created by High Pressure High Temperature (HPHT) growth process.
 Type II
 Faint Blue



Sample Image Used



IGI

August 18, 2023
 IGI Report No **LG591352081**
CUSHION MODIFIED BRILLIANT
 7.18 X 5.32 X 3.58 MM
 Carat Weight **1.06 CARAT**
 Color Grade **G**
 Clarity Grade **VVS 2**
 Depth **50.5%**
 Table **13.5%**
 Girdle **62%**
 Medium (Faceted)
 Culet **Pointed**
 Polish **EXCELLENT**
 Symmetry **EXCELLENT**
 Fluorescence **NONE**
 Inscription(s) **IGI LG591352081**
 Comments: As Grown - No indication of post-growth treatment.
 This Laboratory Grown Diamond was created by High Pressure High Temperature (HPHT) growth process.
 Type II
 Faint Blue