



**ELECTRONIC COPY**

**LABORATORY GROWN DIAMOND REPORT**

August 2, 2023  
 IGI Report Number **LG591359337**  
 Description **LABORATORY GROWN  
DIAMOND**  
 Shape and Cutting Style **ROUND BRILLIANT**  
 Measurements **6.91 - 6.93 X 4.28 MM**

**GRADING RESULTS**

Carat Weight **1.27 CARAT**  
 Color Grade **FANCY VIVID PINK**  
 Clarity Grade **VS 1**  
 Cut Grade **IDEAL**

**ADDITIONAL GRADING INFORMATION**

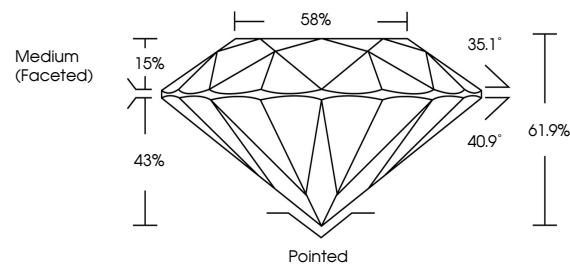
Polish **VERY GOOD**  
 Symmetry **EXCELLENT**  
 Fluorescence **SLIGHT**  
 Inscription(s) **IGI LG591359337**

Comments: This Laboratory Grown Diamond was created by Chemical Vapor Deposition (CVD) growth process.  
 Indications of post-growth treatment.

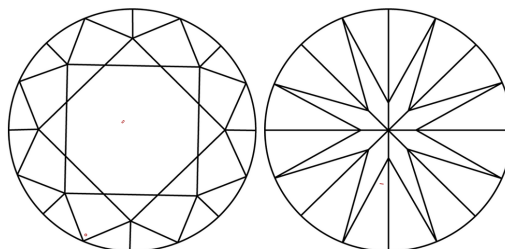
**LABORATORY GROWN DIAMOND REPORT**

**LG591359337**  
 Report verification at [igi.org](http://igi.org)

**PROPORTIONS**



**CLARITY CHARACTERISTICS**



**KEY TO SYMBOLS**

Red symbols indicate internal characteristics.  
 Green symbols indicate external characteristics.

**LABORATORY GROWN  
DIAMOND REPORT**

**GRADING SCALES**

**CLARITY**

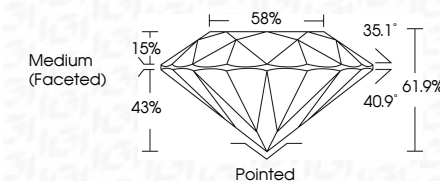
| IF                  | VVS <sup>1-2</sup>          | VS <sup>1-2</sup>      | SI <sup>1-2</sup> | I <sup>1-3</sup> |
|---------------------|-----------------------------|------------------------|-------------------|------------------|
| Internally Flawless | Very Very Slightly Included | Very Slightly Included | Slightly Included | Included         |

**COLOR**

| D          | E           | F     | G             | H           | I | J | Faint | Very Light | Light |
|------------|-------------|-------|---------------|-------------|---|---|-------|------------|-------|
| Light Tint | Fancy Light | Fancy | Fancy Intense | Fancy Vivid |   |   |       |            |       |

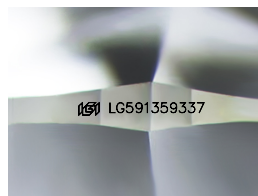
**LABORATORY GROWN DIAMOND REPORT**

August 2, 2023  
 IGI Report Number **LG591359337**  
 Description **LABORATORY GROWN  
DIAMOND**  
 Shape and Cutting Style **ROUND BRILLIANT**  
 Measurements **6.91 - 6.93 X 4.28 MM**  
**GRADING RESULTS**  
 Carat Weight **1.27 CARAT**  
 Color Grade **FANCY VIVID PINK**  
 Clarity Grade **VS 1**  
 Cut Grade **IDEAL**



**ADDITIONAL GRADING INFORMATION**

Polish **VERY GOOD**  
 Symmetry **EXCELLENT**  
 Fluorescence **SLIGHT**  
 Inscription(s) **IGI LG591359337**  
 Comments: This Laboratory Grown Diamond was created by Chemical Vapor Deposition (CVD) growth process.  
 Indications of post-growth treatment.



Sample Image Used



|                 |                           |              |                  |               |           |       |       |                  |         |           |           |              |                 |
|-----------------|---------------------------|--------------|------------------|---------------|-----------|-------|-------|------------------|---------|-----------|-----------|--------------|-----------------|
| August 2, 2023  | IGI Report No LG591359337 | 1.27 CARAT   | FANCY VIVID PINK | VS 1          | IDEAL     | 61.9% | 58%   | Medium (Faceted) | Pointed | VERY GOOD | EXCELLENT | SLIGHT       | IGI LG591359337 |
| ROUND BRILLIANT | 6.91 - 6.93 X 4.28 MM     | Carat Weight | Color Grade      | Clarity Grade | Cut Grade | Depth | Table | Girdle           | Culet   | Polish    | Symmetry  | Fluorescence | Inscription(s)  |

Comments: This Laboratory Grown Diamond was created by Chemical Vapor Deposition (CVD) growth process.  
 Indications of post-growth treatment.