



**INTERNATIONAL  
GEMOLOGICAL  
INSTITUTE**

**ELECTRONIC COPY**

**LABORATORY GROWN  
DIAMOND REPORT**

**LG591372135**

**IGI LABORATORY GROWN  
DIAMOND ID REPORT**

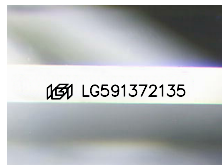
July 19, 2023  
IGI Report Number **LG591372135**  
**PRINCESS CUT**  
**4.70 X 4.65 X 3.04 MM**  
Carat Weight 0.56 CARAT  
Color Grade D  
Clarity Grade VVS 2  
Polish GOOD  
Symmetry VERY GOOD  
Fluorescence NONE  
Inscription(s) LG591372135

Comments: This Laboratory Grown Diamond was created by Chemical Vapor Deposition (CVD) growth process and may include post-growth treatment. Type Ila

**LABORATORY GROWN DIAMOND REPORT**

**IGI LABORATORY GROWN DIAMOND IDENTIFICATION REPORT**

July 19, 2023  
IGI Report Number LG591372135  
Description LABORATORY GROWN DIAMOND  
Shape and Cutting Style PRINCESS CUT  
Measurements 4.70 X 4.65 X 3.04 MM



Sample Image Used

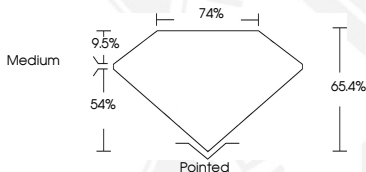
**GRADING RESULTS**

Carat Weight 0.56 CARAT  
Color Grade D  
Clarity Grade VVS 2

**ADDITIONAL GRADING INFORMATION**

Polish GOOD  
Symmetry VERY GOOD  
Fluorescence NONE  
Inscription(s) LG591372135

Comments: This Laboratory Grown Diamond was created by Chemical Vapor Deposition (CVD) growth process and may include post-growth treatment. Type Ila



**IGI LABORATORY GROWN  
DIAMOND ID REPORT**

July 19, 2023  
IGI Report Number **LG591372135**  
**PRINCESS CUT**  
**4.70 X 4.65 X 3.04 MM**  
Carat Weight 0.56 CARAT  
Color Grade D  
Clarity Grade VVS 2  
Polish GOOD  
Symmetry VERY GOOD  
Fluorescence NONE  
Inscription(s) LG591372135

Comments: This Laboratory Grown Diamond was created by Chemical Vapor Deposition (CVD) growth process and may include post-growth treatment. Type Ila



THIS DOCUMENT WAS PRODUCED WITH THE FOLLOWING SECURITY MEASURES: SPECIAL DOCUMENT PAPER, INK SCREENS, WATERMARK, BACKGROUND DESIGN, HOLOGRAM AND OTHER SECURITY FEATURES NOT LISTED AND DO EXCEED DOCUMENT SECURITY INDUSTRY GUIDELINES.

For terms & conditions and to verify this report, please visit [www.igi.org](http://www.igi.org)