

**ELECTRONIC COPY**

## LABORATORY GROWN DIAMOND REPORT

July 19, 2023	
IGI Report Number	LG591389527
Description	LABORATORY GROWN DIAMOND
Shape and Cutting Style	SQUARE EMERALD CUT
Measurements	7.05 X 7.00 X 4.54 MM

## GRADING RESULTS

Carat Weight	2.07 CARATS
Color Grade	G
Clarity Grade	SI 2

### ADDITIONAL GRADING INFORMATION

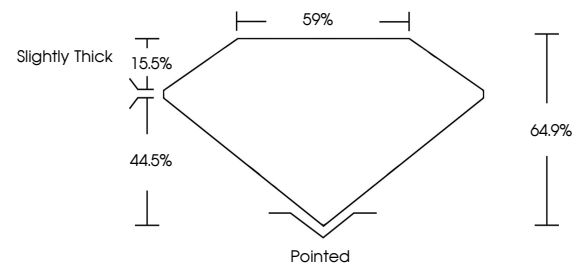
Polish	EXCELLENT
Symmetry	EXCELLENT
Fluorescence	NONE
Inscription(s)	 LG591389527

Comments: This Laboratory Grown Diamond was created by Chemical Vapor Deposition (CVD) growth process and may include post-growth treatment.  
Type IIa

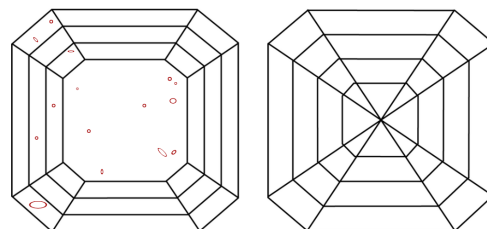
## LABORATORY GROWN DIAMOND REPORT

LG591389527  
Report verification at [igi.org](https://igi.org)

## PROPORTIONS



## CLARITY CHARACTERISTICS



## KEY TO SYMBOLS

Red symbols indicate internal characteristics.  
Green symbols indicate external characteristics.

LABORATORY GROWN  
DIAMOND REPORT

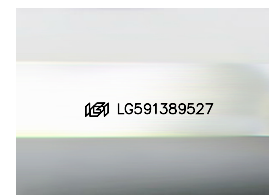
## GRADING SCALES

## CLARITY

IF	VVS <sup>1-2</sup>	VS <sup>1-2</sup>	SI <sup>1-2</sup>	I <sup>1-3</sup>
Internally Flawless	Very Very Slightly Included	Very Slightly Included	Slightly Included	Included

**COLOR**

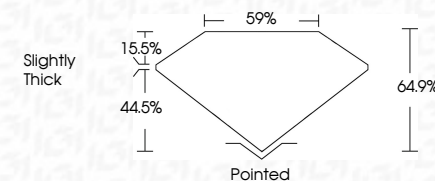
D E F G H I J Faint Very Light Light



Sample Image Used

## LABORATORY GROWN DIAMOND REPORT

July 19, 2023	
IGI Report Number	LG591389527
Description	LABORATORY GROWN DIAMOND
Shape and Cutting Style	SQUARE EMERALD CUT
Measurements	7.05 X 7.00 X 4.54 MM
<b>GRADING RESULTS</b>	
Carat Weight	2.07 CARATS
Color Grade	G
Clarity Grade	S1 2



### ADDITIONAL GRADING INFORMATION

Polish	EXCELLENT
Symmetry	EXCELLENT
Fluorescence	NONE
Inscription(s)	(16) LG591389527

Comments: This Laboratory Grown Diamond was created by Chemical Vapor Deposition (CVD) growth process and may include post-growth treatment.  
Type IIa



July 19, 2023  
GI Report No LG591389527  
SQUARE EMERALD C/IT

0.05 X 7.00 X 4.54 MM	2.07 CARATS	
Carat Weight		
Color Grade	G	
Clarity Grade	S12	
Depth	64.9%	
Table	59%	
Girdle	Slightly Thick	
Culet	Pointed	
Polish	EXCELLENT	
Symmetry	EXCELLENT	
Fluorescence	NONE	

**Comments:**  
This Laboratory Grown Diamond was created by Chemical Vapor Deposition (CVD) growth process and may include post-growth treatment.