



**ELECTRONIC COPY**

**LABORATORY GROWN DIAMOND REPORT**

September 12, 2023  
 IGI Report Number **LG592327483**  
 Description **LABORATORY GROWN  
DIAMOND**  
 Shape and Cutting Style **CUSHION ANTIQUE BRILLIANT**  
 Measurements **10.09 X 10.01 X 6.26 MM**

**GRADING RESULTS**

Carat Weight **6.10 CARATS**  
 Color Grade **F**  
 Clarity Grade **VVS 2**  
 Cut Grade **VERY GOOD**

**ADDITIONAL GRADING INFORMATION**

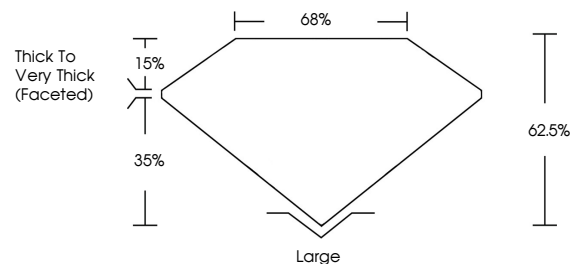
Polish **VERY GOOD**  
 Symmetry **GOOD**  
 Fluorescence **NONE**  
 Inscription(s) **IGI LG592327483**

Comments: This Laboratory Grown Diamond was created by Chemical Vapor Deposition (CVD) growth process and may include post-growth treatment. Type IIa

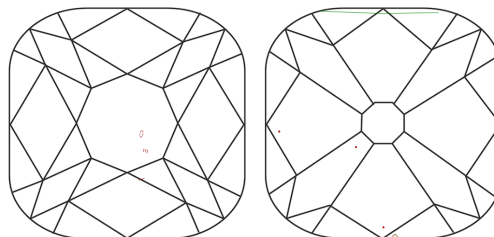
**LABORATORY GROWN DIAMOND REPORT**

**LG592327483**  
 Report verification at [igi.org](http://igi.org)

**PROPORTIONS**



**CLARITY CHARACTERISTICS**



**KEY TO SYMBOLS**

Red symbols indicate internal characteristics.  
 Green symbols indicate external characteristics.

**LABORATORY GROWN  
DIAMOND REPORT**

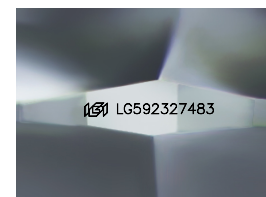
**GRADING SCALES**

**CLARITY**

IF	VVS <sup>1-2</sup>	VS <sup>1-2</sup>	SI <sup>1-2</sup>	I <sup>1-3</sup>
Internally Flawless	Very Very Slightly Included	Very Slightly Included	Slightly Included	Included

**COLOR**

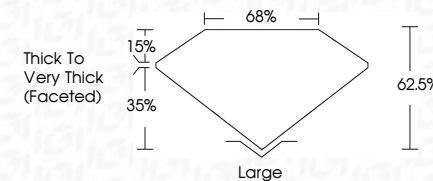
D	E	F	G	H	I	J	Faint	Very Light	Light
---	---	---	---	---	---	---	-------	------------	-------



Sample Image Used

**LABORATORY GROWN DIAMOND REPORT**

September 12, 2023  
 IGI Report Number **LG592327483**  
 Description **LABORATORY GROWN  
DIAMOND**  
 Shape and Cutting Style **CUSHION ANTIQUE BRILLIANT**  
 Measurements **10.09 X 10.01 X 6.26 MM**  
**GRADING RESULTS**  
 Carat Weight **6.10 CARATS**  
 Color Grade **F**  
 Clarity Grade **VVS 2**  
 Cut Grade **VERY GOOD**



**ADDITIONAL GRADING INFORMATION**

Polish **VERY GOOD**  
 Symmetry **GOOD**  
 Fluorescence **NONE**  
 Inscription(s) **IGI LG592327483**  
 Comments: This Laboratory Grown Diamond was created by Chemical Vapor Deposition (CVD) growth process and may include post-growth treatment. Type IIa



**IGI**



September 12, 2023  
 IGI Report No **LG592327483**  
**CUSHION ANTIQUE BRILLIANT**  
**10.09 X 10.01 X 6.26 MM**  
 Carat Weight **6.10 CARATS**  
 Color Grade **F**  
 Clarity Grade **VVS 2**  
 Cut Grade **VERY GOOD**  
 Depth **62.5%**  
 Table **15%**  
 Girdle **Large**  
 Thick to Very Thick (Faceted)  
 Culet **Large**  
 Polish **VERY GOOD**  
 Symmetry **GOOD**  
 Fluorescence **NONE**  
 Inscription(s) **IGI LG592327483**  
 Comments: This Laboratory Grown Diamond was created by Chemical Vapor Deposition (CVD) growth process and may include post-growth treatment. Type IIa