



**INTERNATIONAL  
GEMOLOGICAL  
INSTITUTE**

**ELECTRONIC COPY**

**LABORATORY GROWN  
DIAMOND REPORT**

**LG592334155**

**IGI LABORATORY GROWN  
DIAMOND ID REPORT**

July 31, 2023  
IGI Report Number **LG592334155**  
**ROUND BRILLIANT**  
**5.79 - 5.84 X 3.64 MM**  
Carat Weight 0.78 CARAT  
Color Grade D  
Clarity Grade VVS 1  
Cut Grade VERY GOOD  
Polish VERY GOOD  
Symmetry VERY GOOD  
Fluorescence NONE  
Inscription(s) **LABGROWN (IGI) LG592334155**

Comments: As Grown - No indication of post-growth treatment. This Laboratory Grown Diamond was created by High Pressure High Temperature (HPHT) growth process.

**LABORATORY GROWN DIAMOND REPORT**

**IGI LABORATORY GROWN DIAMOND IDENTIFICATION REPORT**

July 31, 2023  
IGI Report Number **LG592334155**  
Description **LABORATORY GROWN DIAMOND**  
Shape and Cutting Style **ROUND BRILLIANT**  
Measurements **5.79 - 5.84 X 3.64 MM**

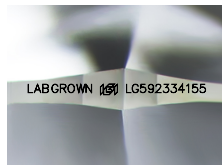
**GRADING RESULTS**

Carat Weight 0.78 CARAT  
Color Grade D  
Clarity Grade VVS 1  
Cut Grade VERY GOOD

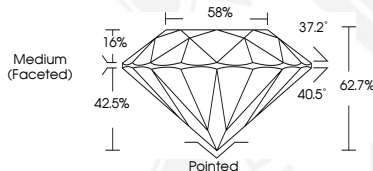
**ADDITIONAL GRADING INFORMATION**

Polish VERY GOOD  
Symmetry VERY GOOD  
Fluorescence NONE  
Inscription(s) **LABGROWN (IGI) LG592334155**

Comments: As Grown - No indication of post-growth treatment. This Laboratory Grown Diamond was created by High Pressure High Temperature (HPHT) growth process.



Sample Image Used



**IGI LABORATORY GROWN  
DIAMOND ID REPORT**

July 31, 2023  
IGI Report Number **LG592334155**  
**ROUND BRILLIANT**  
**5.79 - 5.84 X 3.64 MM**  
Carat Weight 0.78 CARAT  
Color Grade D  
Clarity Grade VVS 1  
Cut Grade VERY GOOD  
Polish VERY GOOD  
Symmetry VERY GOOD  
Fluorescence NONE  
Inscription(s) **LABGROWN (IGI) LG592334155**

Comments: As Grown - No indication of post-growth treatment. This Laboratory Grown Diamond was created by High Pressure High Temperature (HPHT) growth process.

THIS DOCUMENT WAS PRODUCED WITH THE FOLLOWING SECURITY MEASURES: SPECIAL DOCUMENT PAPER, INK SCREENS, WATERMARK, BACKGROUND DESIGN, HOLOGRAM AND OTHER SECURITY FEATURES NOT LISTED AND DO EXCEED DOCUMENT SECURITY INDUSTRY GUIDELINES.

For terms & conditions and to verify this report, please visit [www.igi.org](http://www.igi.org)