



**INTERNATIONAL  
GEMOLOGICAL  
INSTITUTE**

**ELECTRONIC COPY**

**LABORATORY GROWN  
DIAMOND REPORT**

**LG592334238**

**IGI LABORATORY GROWN  
DIAMOND ID REPORT**

August 2, 2023  
IGI Report Number **LG592334238**  
**ROUND BRILLIANT**  
**5.69 - 5.75 X 3.61 MM**  
Carat Weight 0.73 CARAT  
Color Grade E  
Clarity Grade VVS 1  
Cuf Grade VERY GOOD  
Polish VERY GOOD  
Symmetry GOOD  
Fluorescence NONE  
Inscription(s) LABGROWN (IGI) LG592334238

Comments: As Grown - No indication of post-growth treatment. This Laboratory Grown Diamond was created by High Pressure High Temperature (HPHT) growth process.

**LABORATORY GROWN DIAMOND REPORT**

**IGI LABORATORY GROWN DIAMOND IDENTIFICATION REPORT**

August 2, 2023  
IGI Report Number LG592334238  
Description LABORATORY GROWN DIAMOND  
Shape and Cutting Style ROUND BRILLIANT  
Measurements 5.69 - 5.75 X 3.61 MM

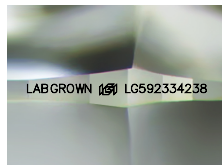
**GRADING RESULTS**

Carat Weight 0.73 CARAT  
Color Grade E  
Clarity Grade VVS 1  
Cut Grade VERY GOOD

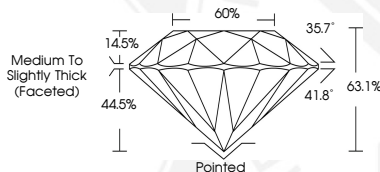
**ADDITIONAL GRADING INFORMATION**

Polish VERY GOOD  
Symmetry GOOD  
Fluorescence NONE  
Inscription(s) LABGROWN (IGI) LG592334238

Comments: As Grown - No indication of post-growth treatment. This Laboratory Grown Diamond was created by High Pressure High Temperature (HPHT) growth process.



Sample Image Used



**IGI LABORATORY GROWN  
DIAMOND ID REPORT**

August 2, 2023  
IGI Report Number **LG592334238**  
**ROUND BRILLIANT**  
**5.69 - 5.75 X 3.61 MM**  
Carat Weight 0.73 CARAT  
Color Grade E  
Clarity Grade VVS 1  
Cuf Grade VERY GOOD  
Polish VERY GOOD  
Symmetry GOOD  
Fluorescence NONE  
Inscription(s) LABGROWN (IGI) LG592334238

Comments: As Grown - No indication of post-growth treatment. This Laboratory Grown Diamond was created by High Pressure High Temperature (HPHT) growth process.

THIS DOCUMENT WAS PRODUCED WITH THE FOLLOWING SECURITY MEASURES: SPECIAL DOCUMENT PAPER, INK SCREENS, WATERMARK, BACKGROUND DESIGN, HOLOGRAM AND OTHER SECURITY FEATURES NOT LISTED AND DO EXCEED DOCUMENT SECURITY INDUSTRY GUIDELINES.

For terms & conditions and to verify this report, please visit [www.igi.org](http://www.igi.org)