



**INTERNATIONAL
GEMOLOGICAL
INSTITUTE**

ELECTRONIC COPY

**LABORATORY GROWN
DIAMOND REPORT**

LG592335072

**IGI LABORATORY GROWN
DIAMOND ID REPORT**

September 13, 2023
IGI Report Number **LG592335072**
ROUND BRILLIANT
5.62 - 5.72 X 3.63 MM
Carat Weight 0.73 CARAT
Color Grade D
Clarity Grade VS 2
Cut Grade VERY GOOD
Polish GOOD
Symmetry VERY GOOD
Fluorescence NONE
Inscription(s) LABGROWN (IGI) LG592335072

Comments: As Grown - No indication of post-growth treatment. This Laboratory Grown Diamond was created by High Pressure High Temperature (HPHT) growth process.

LABORATORY GROWN DIAMOND REPORT

IGI LABORATORY GROWN DIAMOND IDENTIFICATION REPORT

September 13, 2023
IGI Report Number LG592335072
Description LABORATORY GROWN DIAMOND
Shape and Cutting Style ROUND BRILLIANT
Measurements 5.62 - 5.72 X 3.63 MM

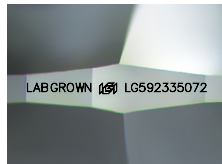
GRADING RESULTS

Carat Weight 0.73 CARAT
Color Grade D
Clarity Grade VS 2
Cut Grade VERY GOOD

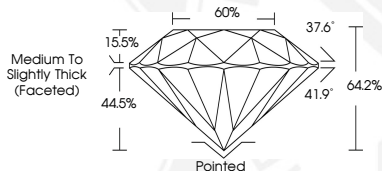
ADDITIONAL GRADING INFORMATION

Polish GOOD
Symmetry VERY GOOD
Fluorescence NONE
Inscription(s) LABGROWN (IGI) LG592335072

Comments: As Grown - No indication of post-growth treatment. This Laboratory Grown Diamond was created by High Pressure High Temperature (HPHT) growth process.



Sample Image Used



**IGI LABORATORY GROWN
DIAMOND ID REPORT**

September 13, 2023
IGI Report Number **LG592335072**
ROUND BRILLIANT
5.62 - 5.72 X 3.63 MM
Carat Weight 0.73 CARAT
Color Grade D
Clarity Grade VS 2
Cut Grade VERY GOOD
Polish GOOD
Symmetry VERY GOOD
Fluorescence NONE
Inscription(s) LABGROWN (IGI) LG592335072

Comments: As Grown - No indication of post-growth treatment. This Laboratory Grown Diamond was created by High Pressure High Temperature (HPHT) growth process.

THIS DOCUMENT WAS PRODUCED WITH THE FOLLOWING SECURITY MEASURES: SPECIAL DOCUMENT PAPER, INK SCREENS, WATERMARK, BACKGROUND DESIGN, HOLOGRAM AND OTHER SECURITY FEATURES NOT LISTED AND DO EXCEED DOCUMENT SECURITY INDUSTRY GUIDELINES.

For terms & conditions and to verify this report, please visit www.igi.org