



ELECTRONIC COPY

LG592336561

Report verification at igi.org

LABORATORY GROWN DIAMOND REPORT

August 2, 2023
IGI Report Number **LG592336561**

Description **LABORATORY GROWN
DIAMOND**

Shape and Cutting Style **CUSHION MODIFIED BRILLIANT**

Measurements **9.27 X 8.06 X 5.42 MM**

GRADING RESULTS

Carat Weight **3.09 CARATS**

Color Grade **G**

Clarity Grade **VS 1**

ADDITIONAL GRADING INFORMATION

Polish **VERY GOOD**

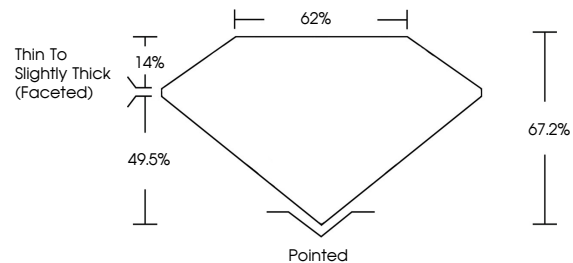
Symmetry **EXCELLENT**

Fluorescence **NONE**

Inscription(s) **IGI LG592336561**

Comments: This Laboratory Grown Diamond was created by Chemical Vapor Deposition (CVD) growth process and may include post-growth treatment. Type IIa

PROPORTIONS



GRADING SCALES

CLARITY

IF	VVS ¹⁻²	VS ¹⁻²	SI ¹⁻²	I ¹⁻³
Internally Flawless	Very Very Slightly Included	Very Slightly Included	Slightly Included	Included

COLOR

D	E	F	G	H	I	J	Faint	Very Light	Light
---	---	---	---	---	---	---	-------	------------	-------

August 2, 2023
IGI Report Number **LG592336561**
Description **LABORATORY GROWN
DIAMOND**
Shape and Cutting Style **CUSHION MODIFIED
BRILLIANT**

Measurements **9.27 X 8.06 X 5.42 MM**

GRADING RESULTS

Carat Weight **3.09 CARATS**

Color Grade **G**

Clarity Grade **VS 1**

ADDITIONAL GRADING INFORMATION

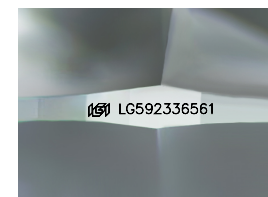
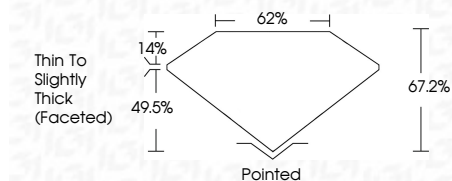
Polish **VERY GOOD**

Symmetry **EXCELLENT**

Fluorescence **NONE**

Inscription(s) **IGI LG592336561**

Comments: This Laboratory Grown Diamond was created by Chemical Vapor Deposition (CVD) growth process and may include post-growth treatment. Type IIa



Sample Image Used



IGI

August 2, 2023	IGI Report No LG592336561	3.09 CARATS	G	VS 1	62%	62%	Thin To Slightly Thick (Faceted)	Pointed	VERY GOOD	EXCELLENT	NONE	IGI LG592336561
CUSHION MODIFIED BRILLIANT		Carat Weight	Color Grade	Clarity Grade	Table	Girdle	Thin To Slightly Thick (Faceted)	Culet	Polish	Symmetry	Fluorescence	Inscription(s)
9.27 X 8.06 X 5.42 MM												

Comments: This Laboratory Grown Diamond was created by Chemical Vapor Deposition (CVD) growth process and may include post-growth treatment. Type IIa