



ELECTRONIC COPY

LG592347747

Report verification at igi.org

LABORATORY GROWN DIAMOND REPORT

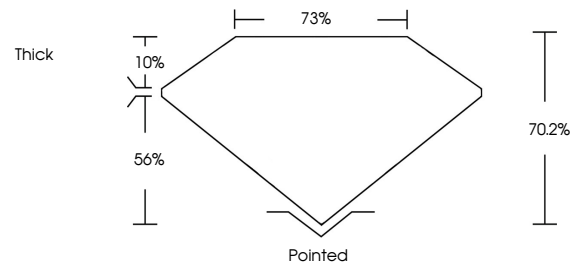
August 11, 2023
 IGI Report Number **LG592347747**
 Description **LABORATORY GROWN
DIAMOND**
 Shape and Cutting Style **PRINCESS CUT**
 Measurements **8.63 X 8.58 X 6.02 MM**
GRADING RESULTS
 Carat Weight **4.00 CARATS**
 Color Grade **E**
 Clarity Grade **SI 1**

ADDITIONAL GRADING INFORMATION

Polish **EXCELLENT**
 Symmetry **VERY GOOD**
 Fluorescence **NONE**
 Inscription(s) **IGI LG592347747**

Comments: This Laboratory Grown Diamond was created by Chemical Vapor Deposition (CVD) growth process and may include post-growth treatment. Type IIa

PROPORTIONS



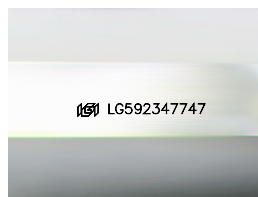
GRADING SCALES

CLARITY

IF	VVS ¹⁻²	VS ¹⁻²	SI ¹⁻²	I ¹⁻³
Internally Flawless	Very Very Slightly Included	Very Slightly Included	Slightly Included	Included

COLOR

D	E	F	G	H	I	J	Faint	Very Light	Light
---	---	---	---	---	---	---	-------	------------	-------

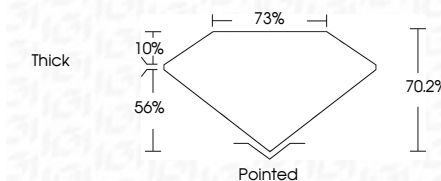


Sample Image Used

August 11, 2023
 IGI Report Number **LG592347747**
 Description **LABORATORY GROWN
DIAMOND**
 Shape and Cutting Style **PRINCESS CUT**
 Measurements **8.63 X 8.58 X 6.02 MM**
GRADING RESULTS
 Carat Weight **4.00 CARATS**
 Color Grade **E**
 Clarity Grade **SI 1**

ADDITIONAL GRADING INFORMATION

Polish **EXCELLENT**
 Symmetry **VERY GOOD**
 Fluorescence **NONE**
 Inscription(s) **IGI LG592347747**
 Comments: This Laboratory Grown Diamond was created by Chemical Vapor Deposition (CVD) growth process and may include post-growth treatment. Type IIa



IGI

August 11, 2023
 IGI Report No LG592347747
PRINCESS CUT
4.00 CARATS
 Carat Weight **8.63 X 8.58 X 6.02 MM**
 Color Grade **E**
 Clarity Grade **SI 1**
 Depth **70.2%**
 Table **75%**
 Girdle **Thick**
 Culet **Pointed**
 Polish **EXCELLENT**
 Symmetry **VERY GOOD**
 Fluorescence **NONE**
 Inscription(s) **IGI LG592347747**

Comments: This Laboratory Grown Diamond was created by Chemical Vapor Deposition (CVD) growth process and may include post-growth treatment. Type IIa