



ELECTRONIC COPY

LABORATORY GROWN DIAMOND REPORT

July 27, 2023
 IGI Report Number **LG592359706**
 Description **LABORATORY GROWN
DIAMOND**
 Shape and Cutting Style **EMERALD CUT**
 Measurements **8.17 X 5.79 X 3.92 MM**
GRADING RESULTS
 Carat Weight **2.03 CARATS**
 Color Grade **G**
 Clarity Grade **VS 1**

ADDITIONAL GRADING INFORMATION

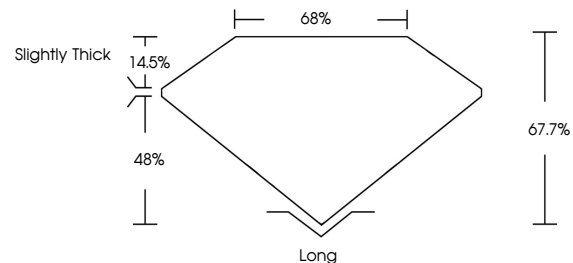
Polish **EXCELLENT**
 Symmetry **EXCELLENT**
 Fluorescence **NONE**
 Inscription(s) **IGI LG592359706**

Comments: This Laboratory Grown Diamond was created by Chemical Vapor Deposition (CVD) growth process and may include post-growth treatment. Type IIa

LABORATORY GROWN DIAMOND REPORT

LG592359706
 Report verification at igi.org

PROPORTIONS



**LABORATORY GROWN
DIAMOND REPORT**

GRADING SCALES

CLARITY

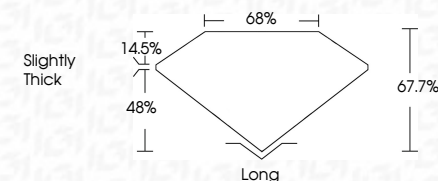
IF	VVS ¹⁻²	VS ¹⁻²	SI ¹⁻²	I ¹⁻³
Internally Flawless	Very Very Slightly Included	Very Slightly Included	Slightly Included	Included

COLOR

D	E	F	G	H	I	J	Faint	Very Light	Light
---	---	---	---	---	---	---	-------	------------	-------

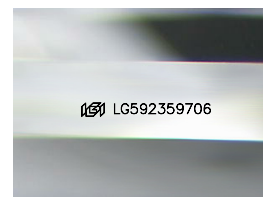
LABORATORY GROWN DIAMOND REPORT

July 27, 2023
 IGI Report Number **LG592359706**
 Description **LABORATORY GROWN
DIAMOND**
 Shape and Cutting Style **EMERALD CUT**
 Measurements **8.17 X 5.79 X 3.92 MM**
GRADING RESULTS
 Carat Weight **2.03 CARATS**
 Color Grade **G**
 Clarity Grade **VS 1**



ADDITIONAL GRADING INFORMATION

Polish **EXCELLENT**
 Symmetry **EXCELLENT**
 Fluorescence **NONE**
 Inscription(s) **IGI LG592359706**
 Comments: This Laboratory Grown Diamond was created by Chemical Vapor Deposition (CVD) growth process and may include post-growth treatment. Type IIa



Sample Image Used



IGI

July 27, 2023
 IGI Report No **LG592359706**
EMERALD CUT
 Carat Weight **2.03 CARATS**
 Color Grade **G**
 Clarity Grade **VS 1**
 Table **67.7%**
 Girdle **68%**
 Culet **Slightly Thick**
 Polish **Long**
 Symmetry **EXCELLENT**
 Fluorescence **EXCELLENT**
 Inscription(s) **NONE**
 IGI LG592359706

Comments: This Laboratory Grown Diamond was created by Chemical Vapor Deposition (CVD) growth process and may include post-growth treatment. Type IIa